

Planning and Housing Commission

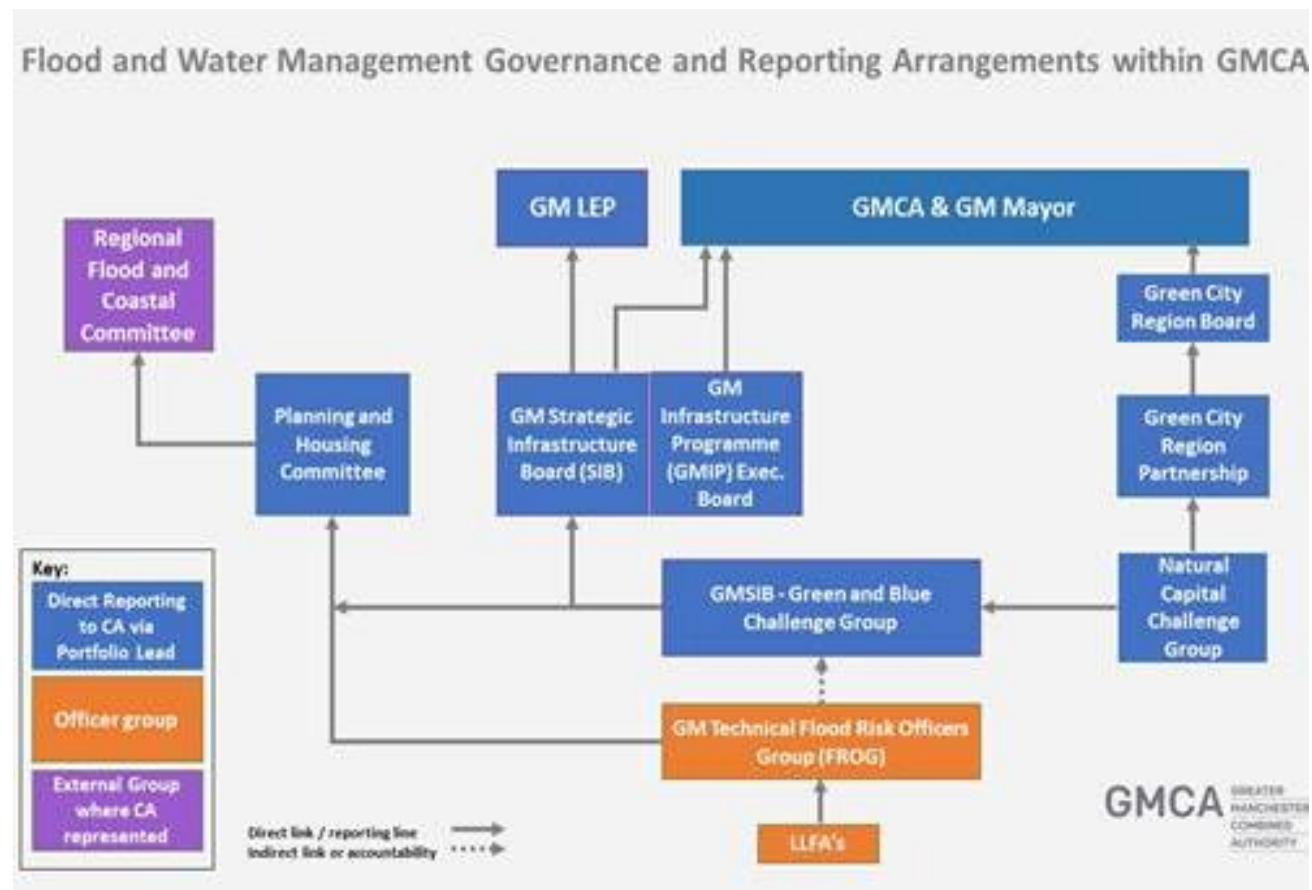
Flood Risk Management Update, 11th December 2020

Jill Holden, Flood and Water Management Programme Manager

Helen Telfer, Environment Agency Growth and Infrastructure Lead (Seconded into GMCA)

Flood Risk Management Governance

- Changes agreed in January 2020 are now embedded.
- FWMB is now dissolved and strategic engagement with RMAs is being undertaken through the Strategic Infrastructure Board (SIB) and associated working groups.
- PHC is the conduit for the NW RFCC members and political engagement - all districts are represented providing a direct route to the CA portfolio holder
- RFCC members from Greater Manchester – 2020/21
 - Cllr. Quinn (Bury), Cllr. Meller (Stockport)
Cllr. Emmott (Rochdale)



Partnership working

- **Bilateral agreements**
 - Agreements have been drafted between the CA (including TfGM), EA and UU and will help facilitate collaboration and commonality in approach with more coherent plans and delivery. Provides a platform for place based interventions, sharing capital investment programmes and leverage of funds.
 - Enables CA/EA and UU to work towards shared outcomes, to prioritise to develop and agreed work programme.
 - Agreements utilised to inform regular liaison meetings.
- **Infrastructure mapping**
 - Core group formed at a GM level where various projects with a spatial/geographical element in relation to 'blue infrastructure' and evidence are being delivered. The group will identify efficiencies by agreeing common approaches and facilitate sharing of data.
- **Drainage and Wastewater Management Portal launch by UU**
 - GiS platform - testing ongoing with LLFA's and other partners.
- **IGNITION Project – focus on SuDS co-investment**
 - Living Lab (Salford Uni)
 - SUDs for Schools
 - Robust evidence base

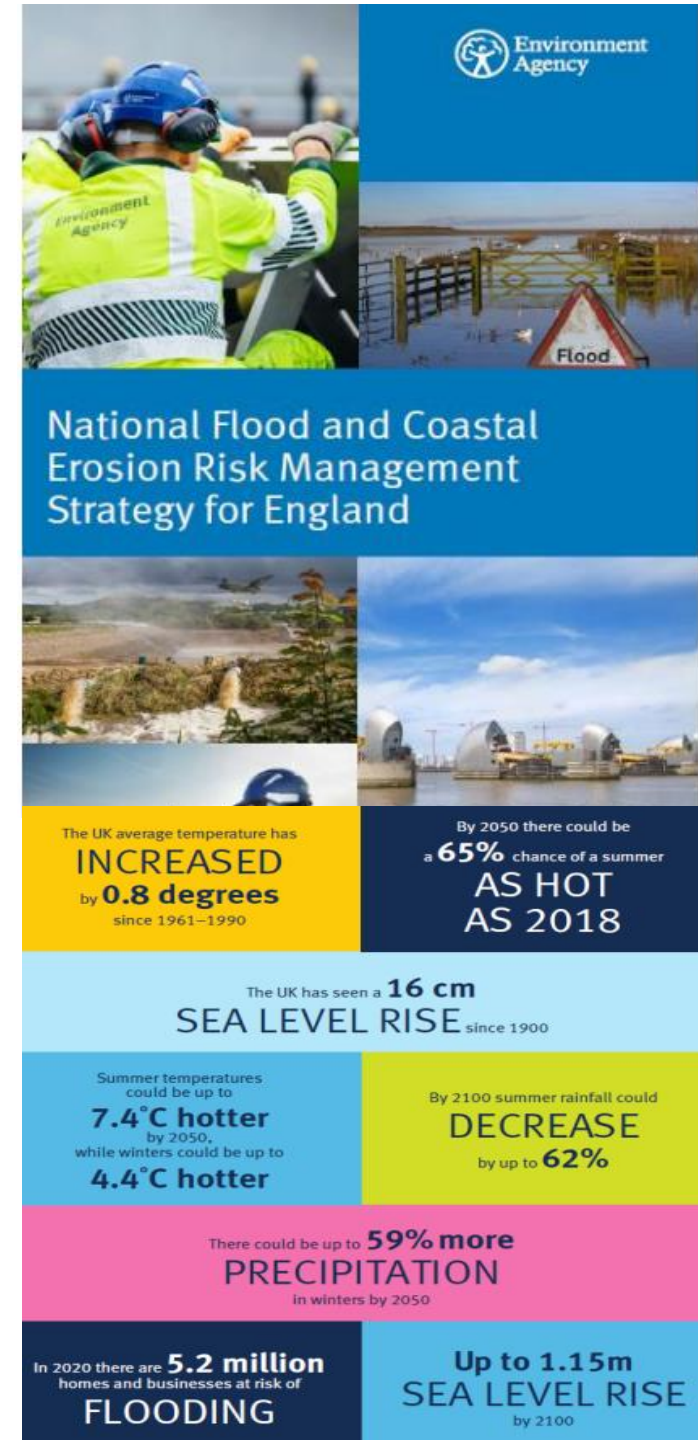
GM Flood Incident Data Feasibility Study

- Central Data project
 - A need to introduce a level of standardisation in data collection to improve consistency and quality of flood incident data was identified.
 - JBA Consulting were commissioned to investigate the current state of flood data collection, suggest improvements as to how positive changes could be implemented and investigate the interest and feasibility of a centralised data platform.
- Final report published - key recommendations
 - Standardise flood incident data collection methods
 - Ensure a more collaborative practice of data sharing.
 - RMAs to focus on storing collected incident data using either GIS or database formats
 - Begin development of a centralised data platform
 - Explore potential for greater public interaction with data collection and reporting. i.e. open channels for the local public to fill in gaps in data collection; to be able to provide more information as a whole.

Strategy

National FCERM Strategy:

- Adopted by government on 25 September 2020.
- Close alignment with the Defra flood and coastal erosion risk management policy statement
- It will move the nation from a concept of protection to one of resilience – traditional flood and sea defences will remain vitally important, but we cannot build our way out of future climate risks in many places.
- Greater emphasis on partnerships, collaboration and place.
- The Action Plan:
 - Work with partners to identify a shared set of practical actions for the first 5 years of the Strategy
 - The action plan will be a national framework to inspire and drive local action.
 - The action plan will be web based, accessible to our partners and the public where actions are owned and updated.
 - Progress reported to the Minister.



Next steps

Autumn /
Winter 2020

- Final Strategy published and adopted following parliamentary scrutiny
- Consultation response document published
- SEA Statement of Environmental Particulars and Final HRA published

Summer 2020
to Spring 2021

- Action planning with partners and stakeholders

Spring 2021

- Partner action plan published

Investment

- SR20 includes a doubling of the government's flood and coastal defence investment to £5.2 billion over six-years (protecting 336,000 properties) which includes:
 - Resilience innovation funding programme: £200m six year flood and coastal resilience programme over 25 local areas. GM bid being considered.
 - £155m to accelerate 22 schemes announced earlier in the year
- Local Levy – 2% increase
 - 2020/21 allocated £2.250m
- Change in criteria to include critical infrastructure

The cover of the National Infrastructure Strategy document features a red background on the left and a photograph of a multi-lane highway curving through a landscape with trees in autumn colors on the right. The title 'National Infrastructure Strategy' is written in large, white, sans-serif font across the red section.

National Infrastructure Strategy

Fairer, faster, greener

The HM Treasury logo, consisting of the Royal Coat of Arms and the text 'HM Treasury', is positioned in the top left corner of the blue section.

HM Treasury

The cover of the Spending Review 2021-22 document has a blue background with various geometric shapes (circles, triangles, squares) made of red dots scattered across it. The title 'SPENDING REVIEW 2021-22' is prominently displayed in white and red text.

SPENDING REVIEW 20²¹/₂₂

Flood events 2020

- Flood events – S19 flood investigations
 - Ciara – Feb/March 2020
 - Bolton draft report being circulated across RMA's for comment
 - July 2019 – Stockport S19 draft currently under consultation
 - <https://www.stockport.gov.uk/flood-investigation-reports>
- S19 flood investigation reports feed into the evidence base to understand level of risk and priority areas for future funding opportunities
 - Challenge to improve data collection and recording to improve consistency across RMA's
- RFCC Technical Advisory Group - creating S19 guidance