

SUEZ RECYCLING AND RECOVERY UK

Greater Manchester

Social Value update
Jan22



Social value



1. Local people into work



2. Local workforce fairly paid



3. Thriving local businesses



4. Responsible businesses contributing to GM



5. Support Authority employees at risk of redundancy



6. Effective and resilient 3rd sector



7. Individuals and communities enabled



8. Acute problems avoided



9. Protection of physical environment & controlling climate change

GREATER MANCHESTER

9 SOCIAL OUTCOMES

54 SOCIAL VALUE COMMITMENTS



SOCIAL VALUE

£150 MILLION

ENVIRONMENTAL VALUE



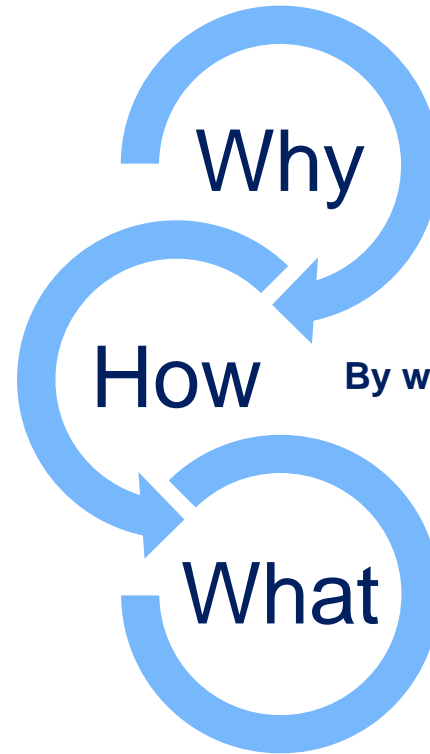
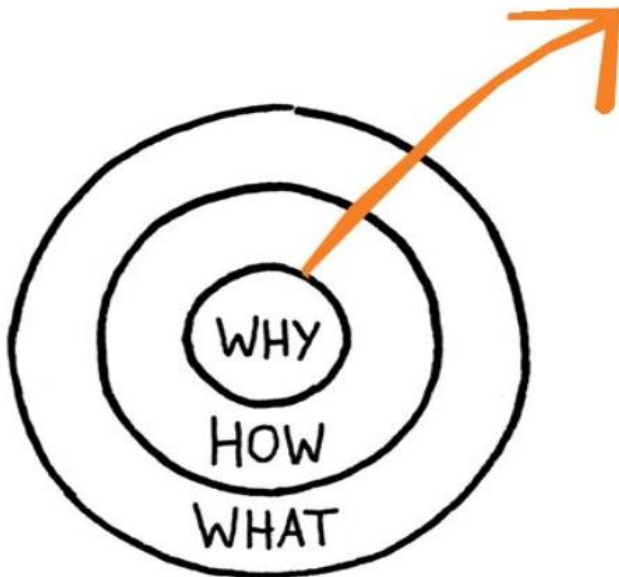
£750 MILLION



ECONOMIC VALUE
£600 MILLION

Creating the Renew Vision – Start with Why...

“People don’t buy what you do, they buy why you do it”.
- Simon Sinek



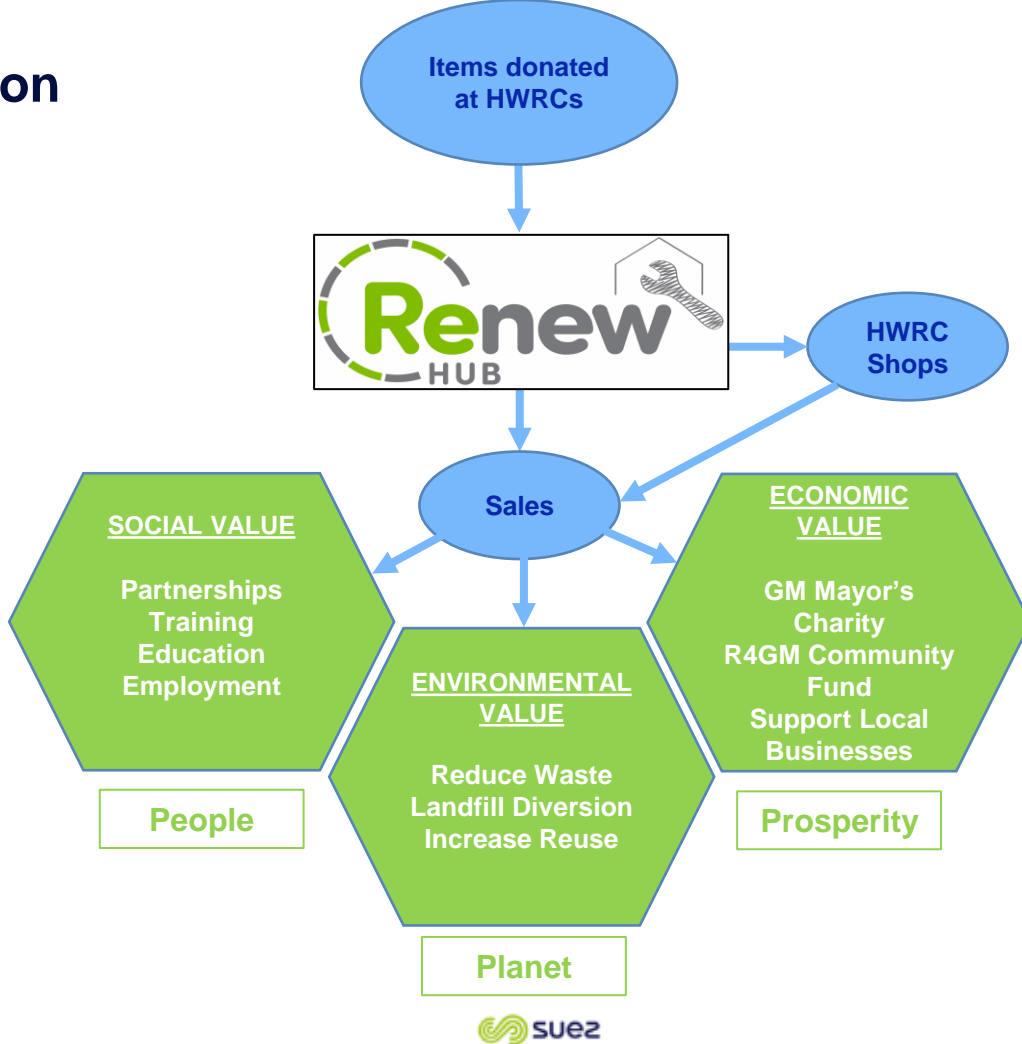
We want to **create value** from waste to benefit Greater Manchester

By working together to **renew** its potential

- Educate, train & employ local people
- Provide opportunities for 3rd sector groups
- Support local SMEs, students & universities
- Support GM Mayors Homeless Fund
- Support R4GM Community Fund

- Deliver 3 reuse shops
- Design & build the Reuse Hub
- Increase HWRC recycling rates
- Save GM residents money

The Renew vision



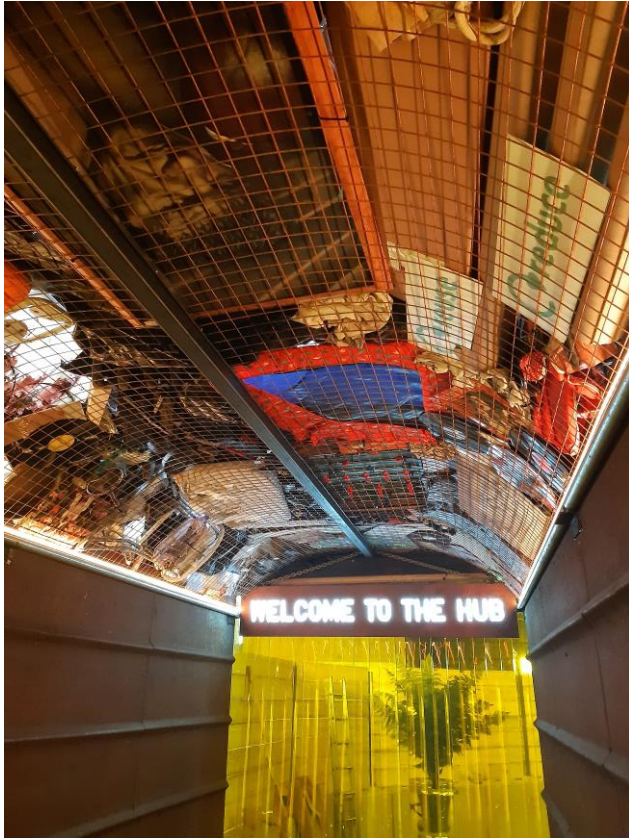
Renew shops

16 out of 20 HWRCs with donation containers, feeding 3 shops at:

- Arkwright Street, Oldham
- Boysnope Wharf recycling centre, Salford
- Woodhouse Lane, Altrincham



Renew Hub

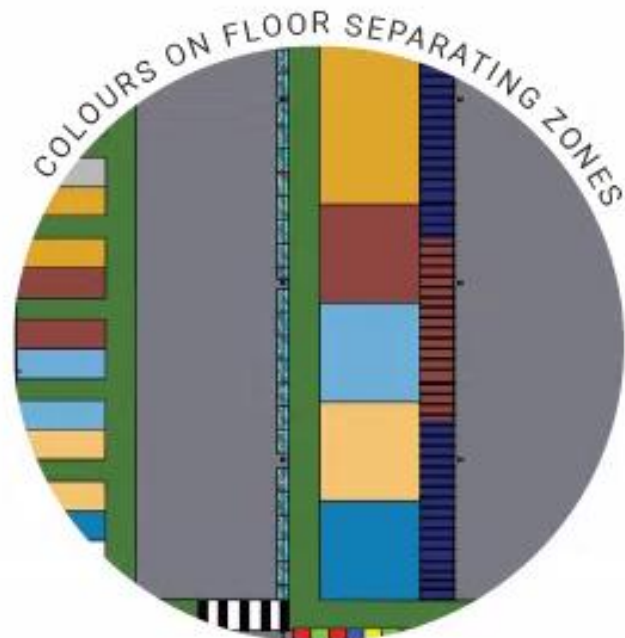


- Zone 1 - Central feed of items for the shops
- Zone 2 - Repair pods
- Zone 3 - Click & collect / online sales
- Zone 4 - Multi-functional event/education/visitor space





Zone 1 – Central feed for the Shops

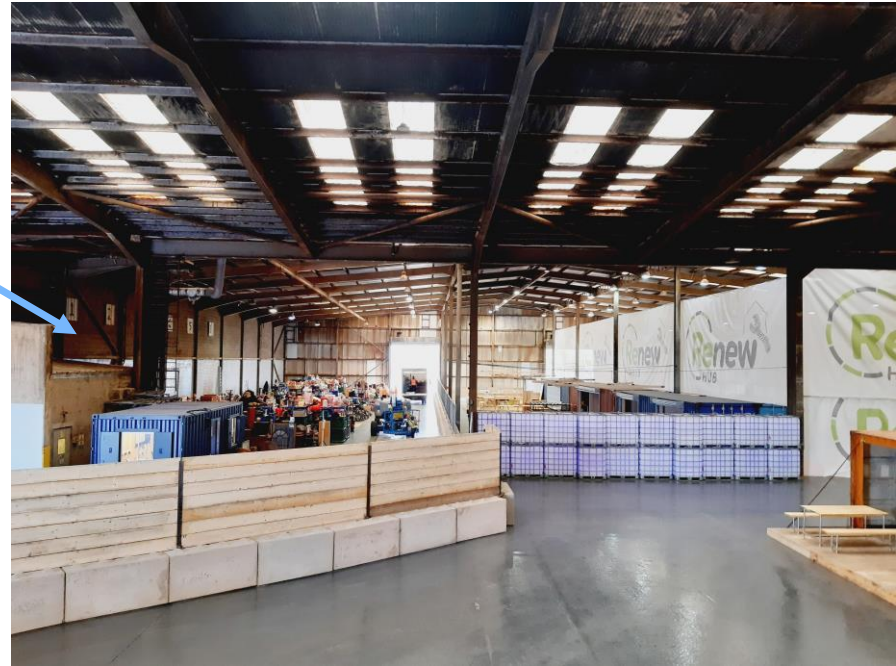


SEPARATING ZONES

The visual displays the floor colour of each zone pulled up onto the walls. As a result, the zones will be easily identifiable for workers unloading and organising the deliveries.

Zone 1 – Central feed of items for the Renew Shops

- Items donated at the HWRCs are collected, processed and put onto an EPOS system before being delivered to the shops through a push-pull system.
- Items that need repair or are more valuable are sent to the repair pods or for online sales (in development).
- Furniture reuse charities across Greater Manchester, e.g. Mustard Tree, also collect furniture from the Hub for free.





Zone 2 - Repair Pods

Zone 2 – Repair pods

- Repair pods will provide work opportunities via local charities who will run them in partnership with us (examples below)
- Joinery – Emerge / Touchwood (collect & repurpose redundant wood)
- Electricals – Recycling Lives (support people from prison to learn new skills & reduce reoffending)
- Bikes – Manchester Bike Kitchen
- Other pods will include a paint booth, reupholstery and metal work.
- Items repaired will be sold in the shops or online.

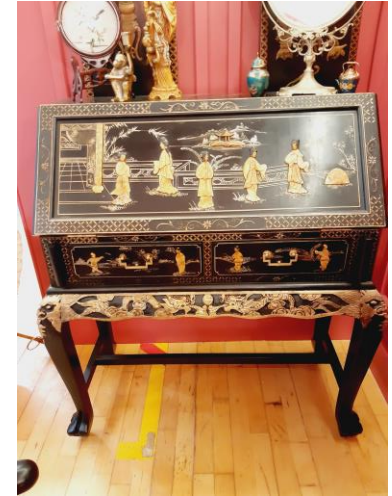


Repair pods



Zone 3 – Storage / click & collect

facebook





Zone 4 - Multi-functional events space

Zone 4 – Multi-functional event space

- Enclosed area within the Hub with separate entrance/exit, kitchen facilities & toilet facilities.
- Stage area with AV and raised seating with linked speakers to give birds eye view of the Hub activity.
- Gallery areas to showcase upcycled items.
- Opportunities are endless with this space and will be used to host groups in partnership with R4GM to educate and offer space for training and workshops.
- Also a community space and events/conference space.



Events area



Creating Value

- **Social Value**

- The repair pods will provide work opportunities & training for green skills
- Events space used to deliver training & engagement with schools and local communities

- **Environmental Value**

- Estimated 600 tonnes diverted from waste in first year
- Promotes a circular economy – less production – reduces carbon

Economic value



THANK YOU

