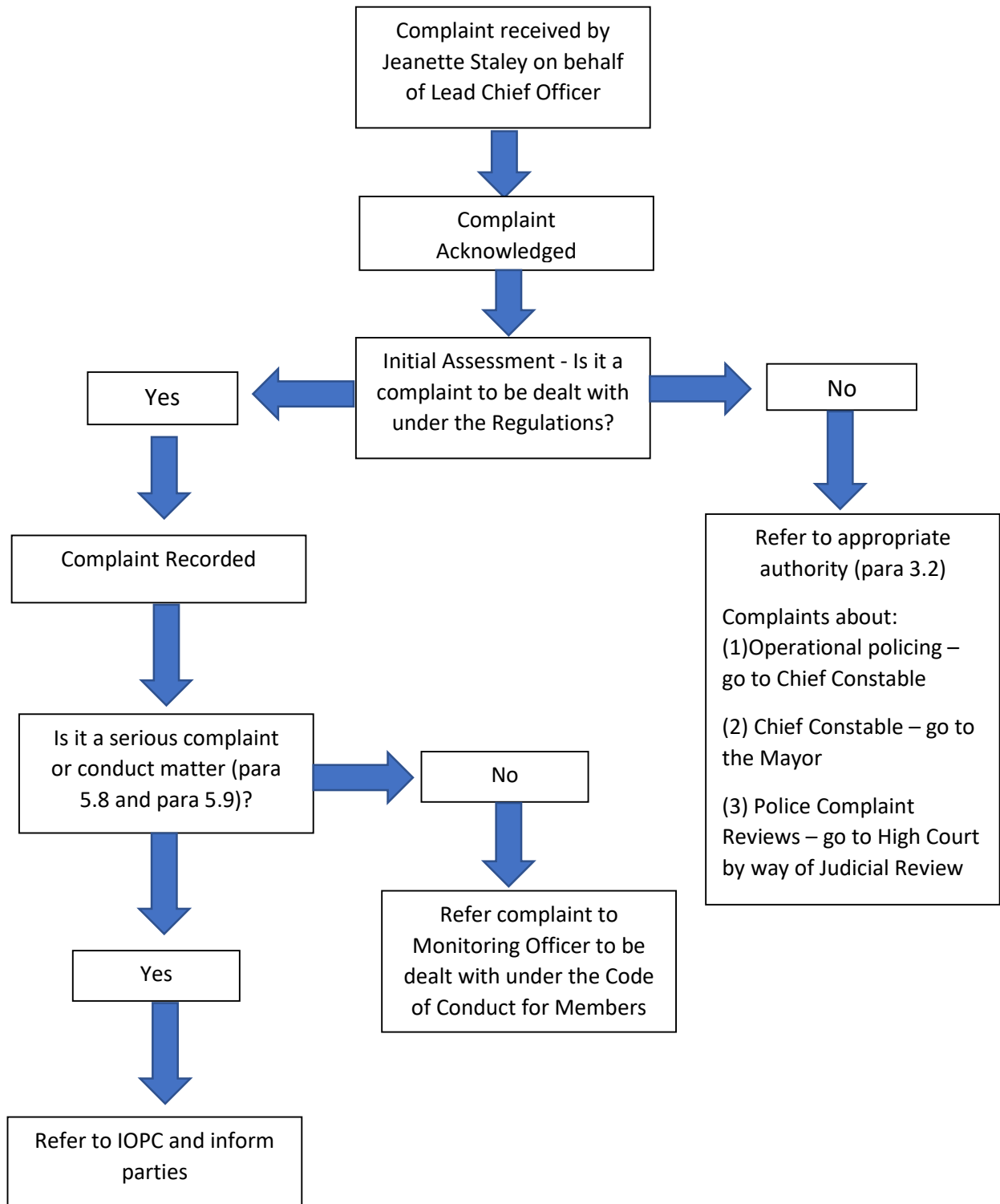
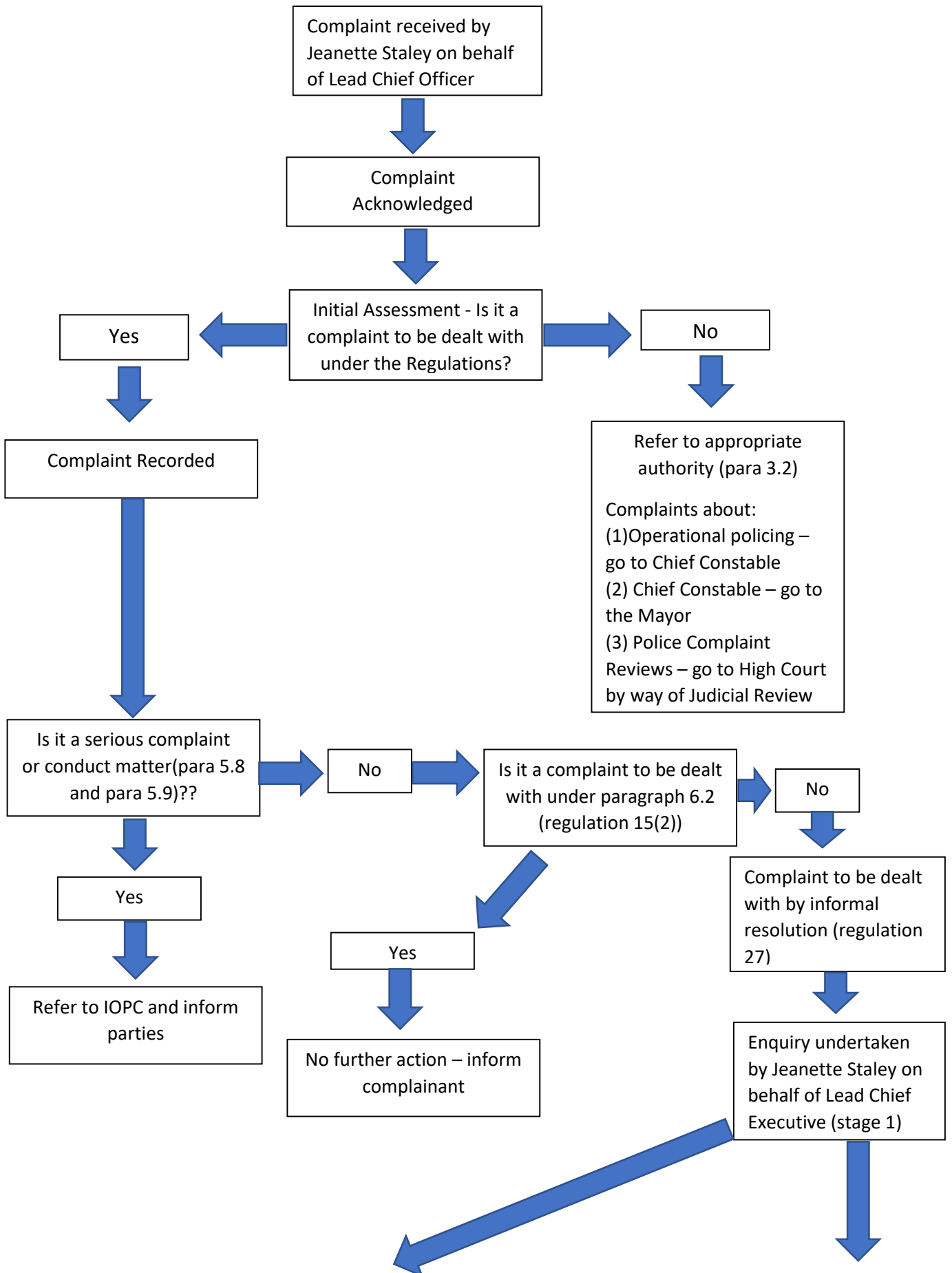



### Complaint against the Mayor




## Complaint against the Deputy Mayor for Policing and Crime







Chief Executive able to resolve complaint e.g. complaint not upheld, or complaint upheld and resolution agreed with GMDMPC and complainant




Complainant and Mayor's Office notified of outcome



Chief Executive unable to resolve complaint



Complaint referred to a Sub-Committee for informal resolution



Complainant and Mayor's Office notified of outcome