

Greater Manchester Police, Fire & Crime Panel

Date: 26th January 2023
Subject: GMFRS Core Plans and Strategies Animation
Report of: DCFO Ben Norman
Report Author: Sarah Scoales, Head of Service Excellence

PURPOSE OF REPORT

This paper provides an overview of the animation Greater Manchester Fire and Rescue Service (GMFRS) has launched setting out our ambitions, core plans and strategies for the next few years to make Greater Manchester a better place for our communities.

RECOMMENDATIONS:

Members are asked to:

- Note the contents of report and the animation and provide any feedback.

CONTACT OFFICERS:

DCFO Ben Norman – ben.norman@manchesterfire.gov.uk

Sarah Scoales, Head of Service Excellence – scoales@manchesterfire.gov.uk

Equalities Impact, Carbon, and Sustainability Assessment:

N/A

Risk Management

N/A

Legal Considerations

N/A

Financial Consequences - Capital

N/A

Financial Consequences - Revenue

N/A

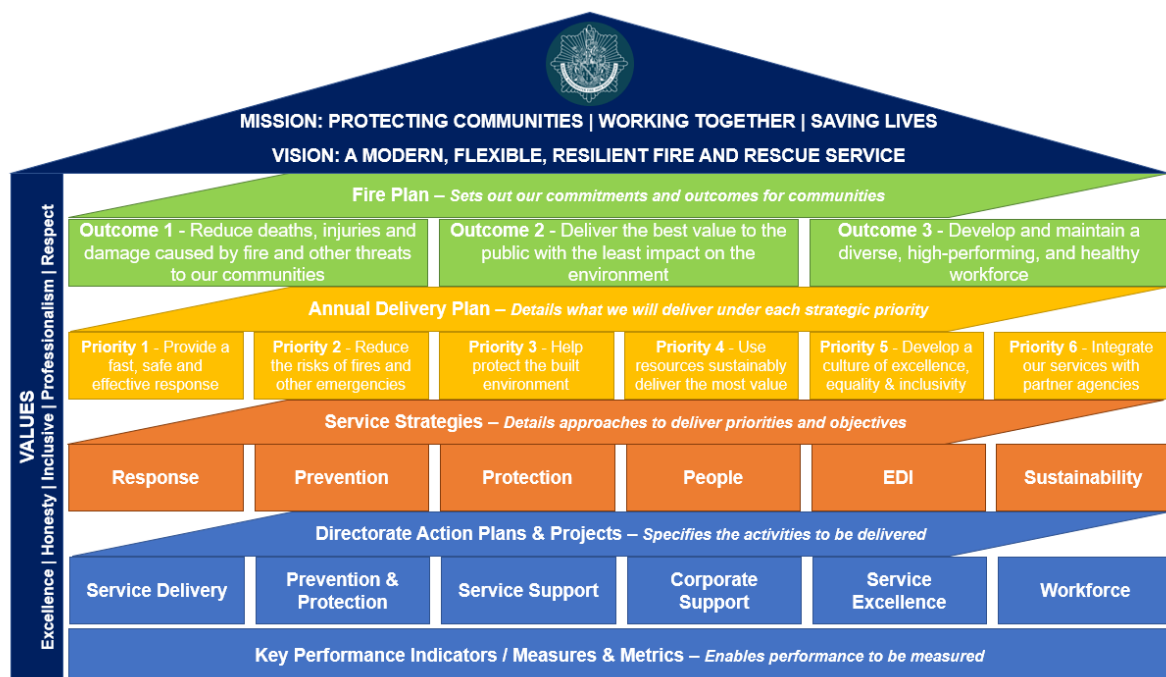
Number of attachments included in the report:

BACKGROUND PAPERS:

TRACKING/PROCESS		
Does this report relate to a major strategic decision, as set out in the GMCA Constitution		Yes/No
EXEMPTION FROM CALL IN		
Are there any aspects in this report which means it should be considered to be exempt from call in by the relevant Scrutiny Committee on the grounds of urgency?		Yes/No
TfGMC	Overview & Scrutiny Committee	
N/A	N/A	

INTRODUCTION

1. GMFRS has a number of corporate documents that detail how we will deliver our services to the communities of Greater Manchester.
2. The Fire Plan sets out our commitments up to 2025. To deliver this, we have an Annual Delivery Plan (ADP) which will set out our mission, vision and values, and actions against each priority together with how we measure our success. Progress against the ADP deliverables is regularly reported through our Governance Framework.
3. Underneath our ADP sits our action plans for each directorate. They set out how the Service will meet the priorities and actions required of it over the year to support the delivery of the ADP and the overarching Fire Plan.
4. We also have a number of Strategies and Plans that will support the delivery of actions.
5. The below diagram sets out how these all fit together.



CURRENT POSITION

6. We recognise the importance of ensuring our staff and the communities of Greater Manchester have a clear understanding of GMFRS' priorities and strategies, and how these are fit together.
7. To assist with this we have developed an animation that brings this to life and provides a clear way to communicate with those who matter the most - the people, partners and communities we serve, and our workforce.
8. Video Link: [GMFRS Plans and Ambitions](#)



9. This animation will form part of our internal and external engagement and communication activities. It will be promoted through various channels, including social media platforms and internally through our Engaged Leaders sessions.

NEXT STEPS

10. During 2023/24, we will look develop further animations, that will build on this by providing more detail on each of the strategies and how each of these specifically deliver against the commitments and priorities set out in our plans.