

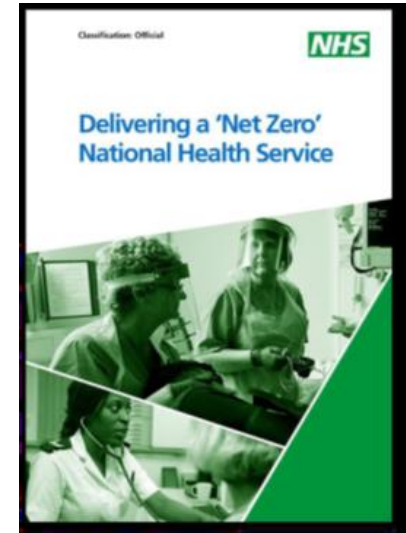
**ITEM 09**

# GM NHS Green Plan

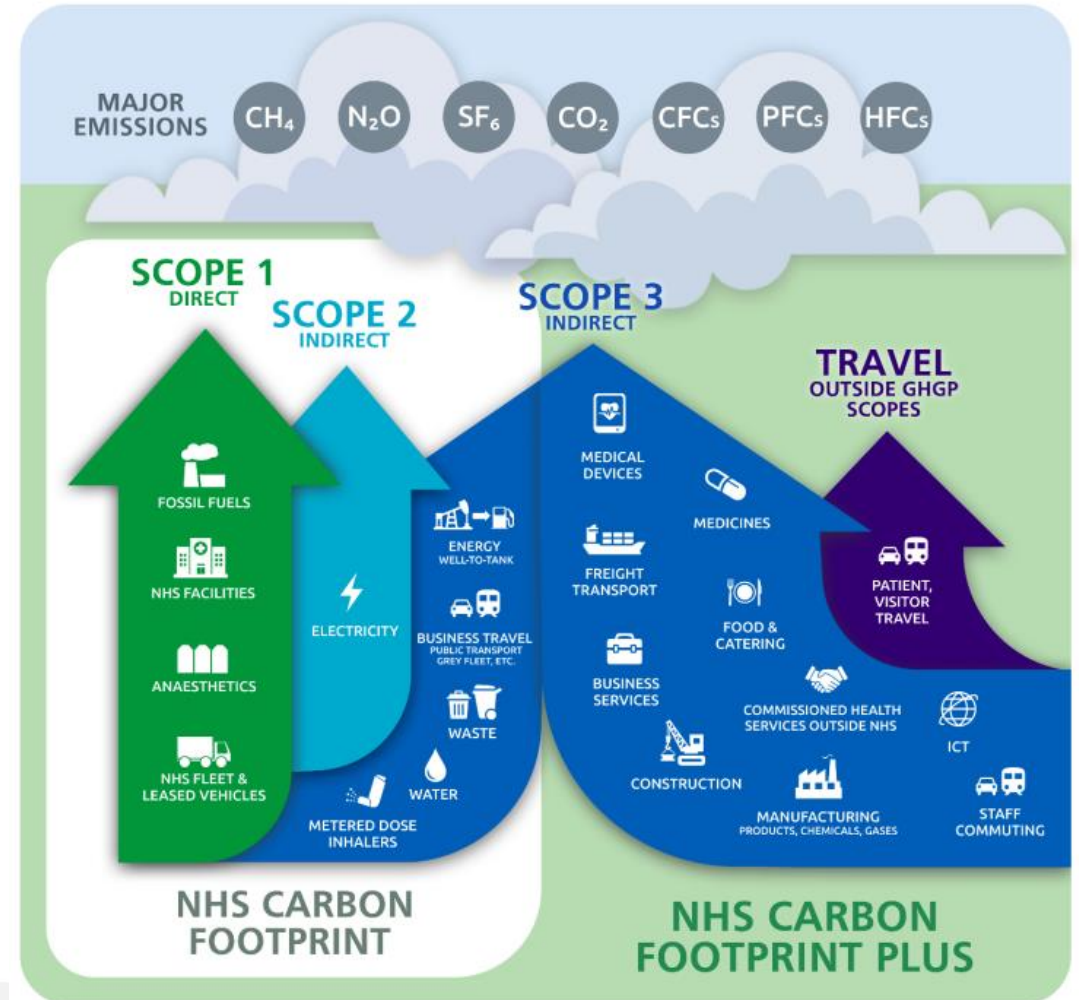
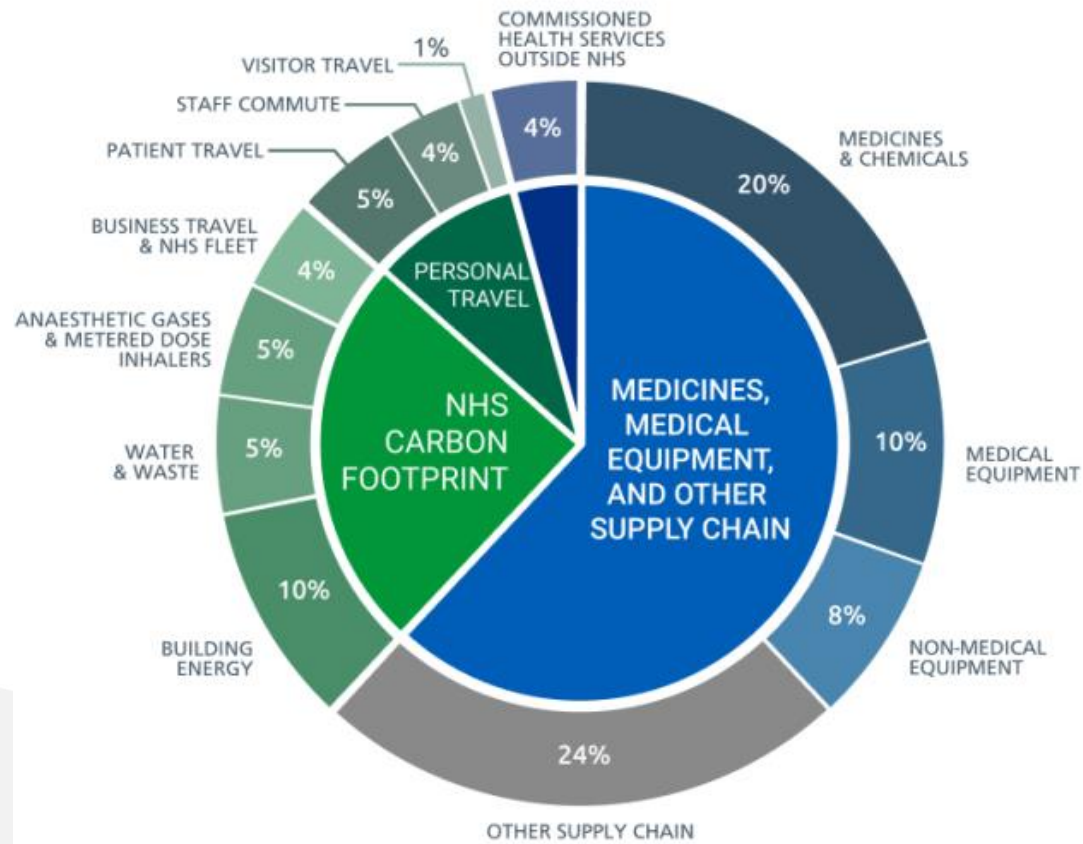


# Background

- In Jan 2020, the NHS became the worlds first health service to commit to reaching net zero carbon, and in October 2020 the Delivering a 'Net Zero' NHS report was launched, requiring every Trust and ICS to have a Green Plan
- The NHS is responsible for around 5% of national carbon emissions and around 3.5% of all traffic on the road
- Net zero is embedded into the Health and Care Act, 'duties in relation to climate change etc'
- In August 2019 the GMHSCP became the first ICS to declare a climate emergency
- In May 2022, NHS Greater Manchester published its first 3-year [Green Plan](#)
- Requirements within NHS Standard Contract, Integrated Care Partnership Strategy and Joint Forward Plan



# NHS Carbon Footprint



# Structure of the NHS

- NHS in England is divided into 42 Integrated Care Systems (ICS's)
- An ICS is a partnership of organisations that comes together to plan and deliver joined up health and care services, and improve lives
- Within an ICS there is
  - **Integrated Care Partnership (ICP)** – statutory committee which brings together broad alliance of partners concerned with improving health and care – approach outlined in a strategy
  - **Integrated Care Board (ICB)** – statutory organisation which manages the NHS budget and arranges for provision of services
  - **Place based partnerships** – brings together all partners in a place e.g. LA
  - **Provider collaboratives** – brings providers together to achieve benefits of working at scale across places to address unwarranted variation and inequalities in access and experience
- Within GM there are nine NHS Trusts with 19 hospitals, emergency and community services, and 2,000 primary care settings



# National Approach

- Within NHSE there is a Greener NHS Team which evolved from a Sustainable Development Unit set up in 2008
- NHS Chief Sustainability Officer is Dr Nick Watts
- Provides tools, guidance, campaigns, data collections, metrics and other support
- There are 7 operating regions, and a small embedded regional Greener NHS Team in each region
- Each year the national team agrees an MOU with the regions and the regional team works with the Integrated Care Systems to deliver
- Deliverables for 23/24 include using a toolkit to measure the carbon impact of virtual wards, eliminating volatile anaesthetic gases with high global warming potential, reducing emissions from nitrous oxide and inhalers and progressing adaptation activities.



Travel and Transport



Estates and Facilities



Research and Innovation



Workforce



Supply Chain and Procurement



Data and Analytics



Food and Nutrition



Medicines



Clinical Transformation

# Focus Areas



Workforce, networks  
and system  
leadership



Sustainable models  
of care



Digital  
transformation



Travel,  
transport and  
air quality



Estates and  
facilities



Medicines



Supply chain and  
procurement



Food and  
nutrition



Climate change  
adaptation



Green space and  
biodiversity



Social value  
and anchors

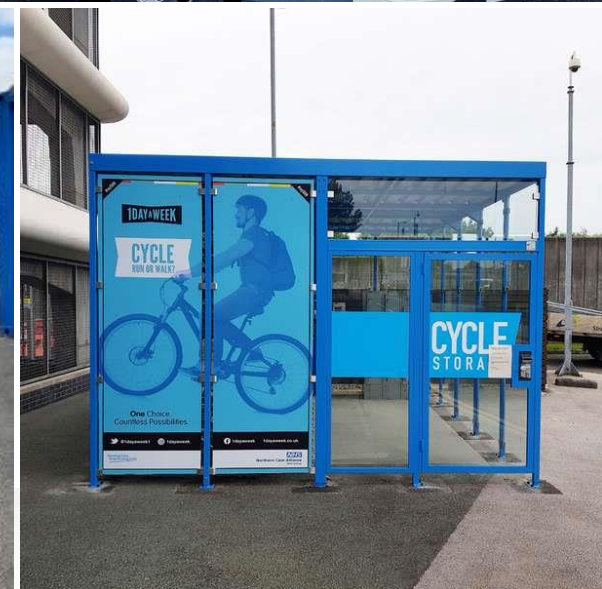
## Resources and Governance

- Dedicated capacity within NHS GM since July 2022 (1.6 FTE). Also Primary Care Sustainability Lead for one day a week, and embedded p/t health liaison role within TfGM.
- Additional resource has been requested (process underway).
- GM Net Zero Delivery Board meets quarterly, chaired by Sarah Price. Membership comprises of senior sponsors for each area of the Green Plan, plus Non Exec lead for sustainability, lead for localities, primary care, representation from GMCA etc.
- We are engaged with key GMCA 5 Year Environment Plan forums
- Formal reporting structure for key senior groups e.g. Trust Chief Execs
- Operational Sustainability Leads meeting takes place quarterly, and many/all of the Trust leads are engaged with their LA Climate Groups
- There is also a NW Net Zero Board, chaired by Dr Andrew Furber (regional Director of Public Health)



# Travel, Transport and Air Quality

- First region to pilot electronic HGVs.
- Fleet data for majority of Trusts.
- eBike hire schemes in place at NCA and MFT.
- Pilots with TfGM to offer discounted public travel to encourage behaviour change.
- Participating in accelerating modal shift programme ‘Stepping up a Gear’ with NHSE.
- Travel survey to be completed for NHS GM staff
- Funding secured for public transport information boards
- Working to embed carbon and air quality considerations into non emergency patient transport service





# Climate Change Adaptation

- One of the priorities for the 22/23 and 23/24 North West Greener NHS programme
- Trusts and ICS are piloting a climate change risk assessment tool developed by NHSE, and have also been supported with a training programme
- A multi-stakeholder approach is being encouraged, working with EPRR colleagues, Estates etc
- During 23/24 this work will progress into the development of climate change adaptation plans
- Participating Trusts are Northern Care Alliance, Pennine Care, Manchester University NHS Foundation Trust and The Christie
- NAP3 (National Adaptation Programme) will contain commitments to address risks to health and social care delivery – for publication 2023

## Medicines Decarbonisation

- Communications campaigns to encourage patient switching to lower emitting inhalers.
- Some pockets of good practice with reducing carbon emissions from inhalers but changes not yet widespread enough to see at GM level
- C. 20% reduction in carbon emissions from nitrous oxide/Entonox between Oct 21 and Oct 22
- Volatile anaesthetic gases with high carbon footprints being removed from estates (desflurane use now down to 1.7% of all volatiles from 27% in 2019).
- Schemes underway to tackle overprescribing and medicines waste.

**Find a  
greener inhaler  
to suit you**



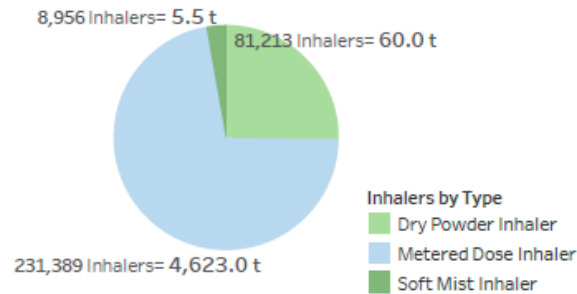
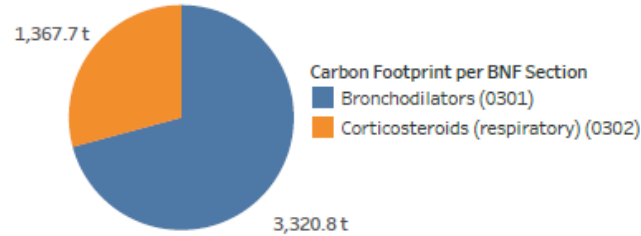
# Medicines Decarbonisation

## Total Carbon Footprint of Prescribed Inhalers - GM

4,688 Metric Tonnes CO<sub>2</sub>e

June 2022 Ju..

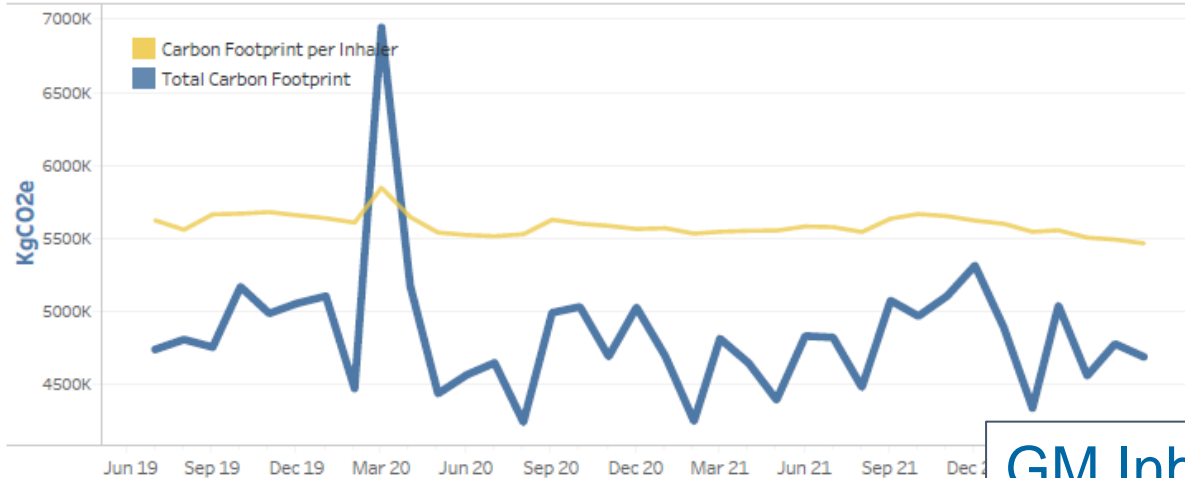
1 metric tonne (1,000kg) looks like a 500m<sup>3</sup> hot air balloon and is equivalent to an average car travelling average mileage for 6 months.



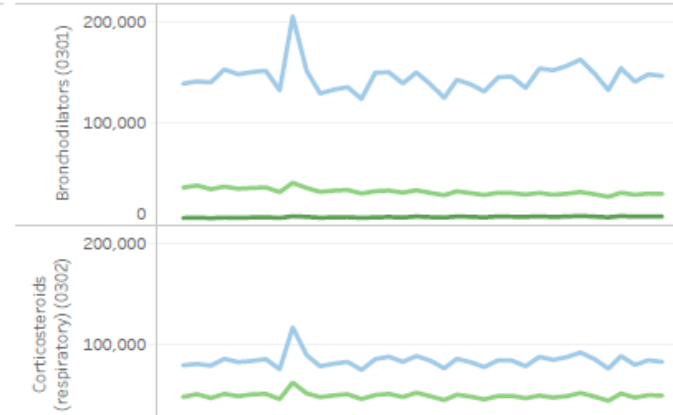
### Organisational Filters

Locality/  
Trust All  
PCN All  
Practice All

### Carbon Footprint Trend



### Inhalers by Type by BNF Section



GM Inhalers the equivalent of 27,000 cars CO<sub>2</sub>e

## Workforce, training and leadership

- Offered 60 funded training places on CSH (Centre for Sustainable Healthcare) training – mix of foundation level and technical courses
- Induction content will be included from the 15<sup>th</sup> March
- Contracting requirements will include reporting on the NHS standard contract service condition 18.2 'progress against Green Plan'
- Cycle to work scheme and car salary sacrifice scheme limited to zero and ultra low vehicles are both now live for NHS GM staff



## GMCA Joint Working

- Actively sharing opportunities and information with the Trust Sustainability Leads and other stakeholders, e.g. Woodland Creation Acceleration Fund
- Opportunity to learn from GMCA programme and work together where there are common challenges
- Current work underway with EY and the North West Net Zero Hub looking at alternative funding models for Estates decarbonisation (Sarah Holland supported)
- Looking at whether we can adapt the solar PV guide for schools for Primary Care
- Working on climate change risk assessments and plans with Natural Capital team
- Some engagement with 5YEP challenge groups
- Establishing routes for NHS referrals to ECO4 via Primary and Secondary Care
- Sharing information and learning from the GMCA 5YEP data team
- Opportunity to do more once we have an expanded team in place

## Asks

- Note and comment on the presentation
- Advise how we can continue to improve links with the GMCA/Local Authorities/Key partners and work more closely on shared priorities
- Embed health improvement into policies and strategies



Greater Manchester  
Integrated Care

Questions or Comments?