

# **Mayoral Update: Bus Franchising Tranche 1 Performance**

Bee Network Committee

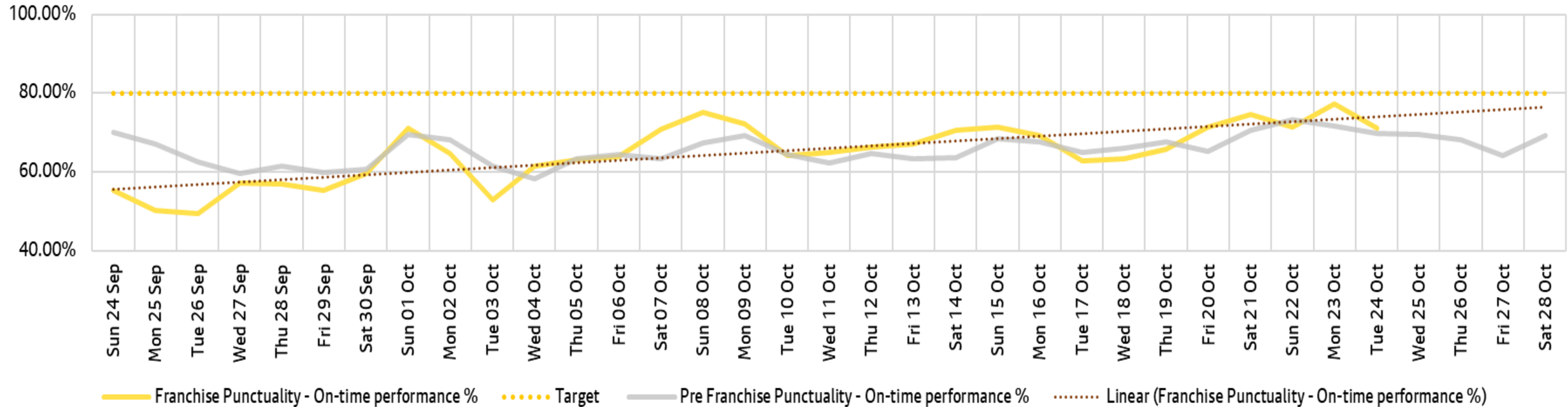
Thursday 26 October 2023



**BEE NETWORK**

# Punctuality

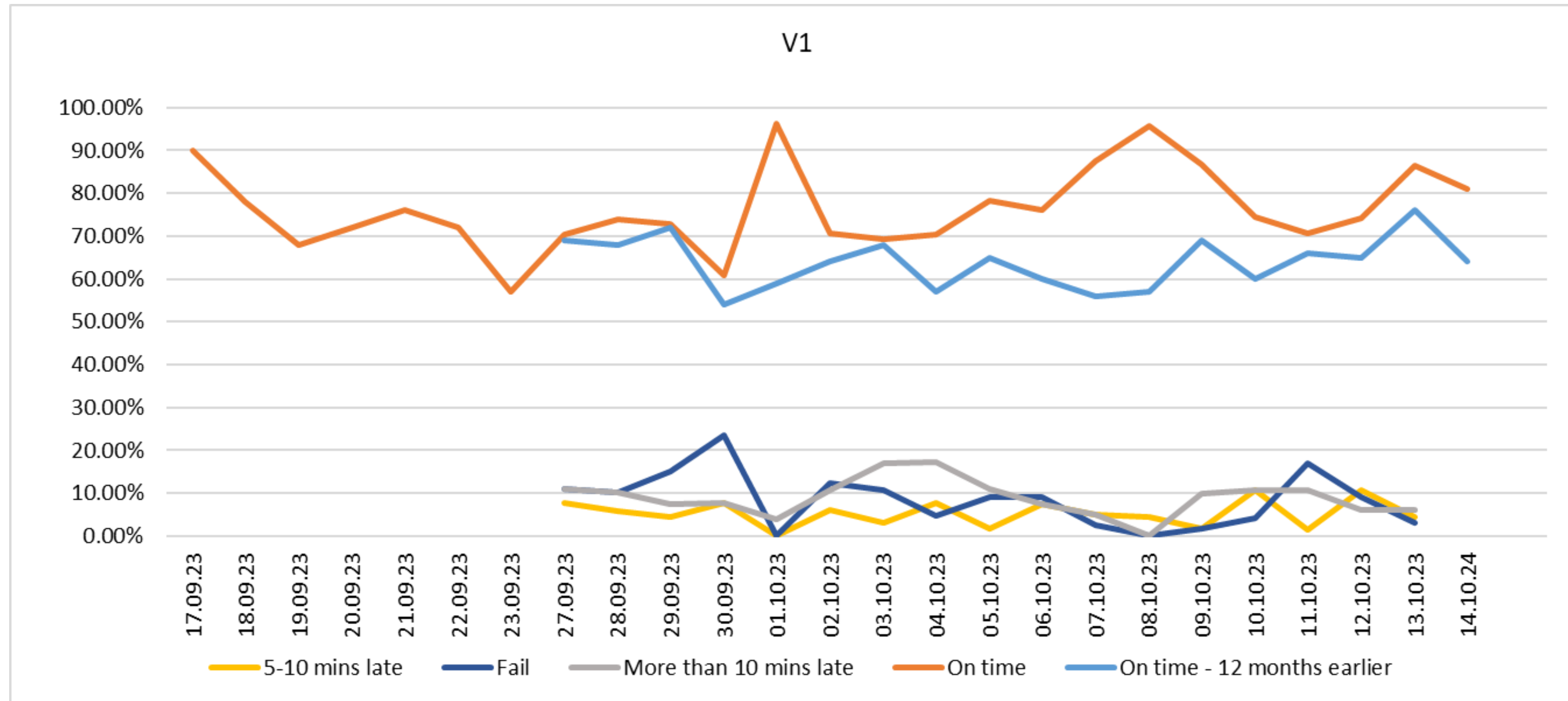
Franchise Tranche 1 Daily Punctuality % - On Time Performance (1min early and 5mins late)



Overall punctuality in the Tranche 1 area continues to improve and increased from 70.70% to 74.4% in last few weeks. Punctuality is broadly comparable or better than this time last year.



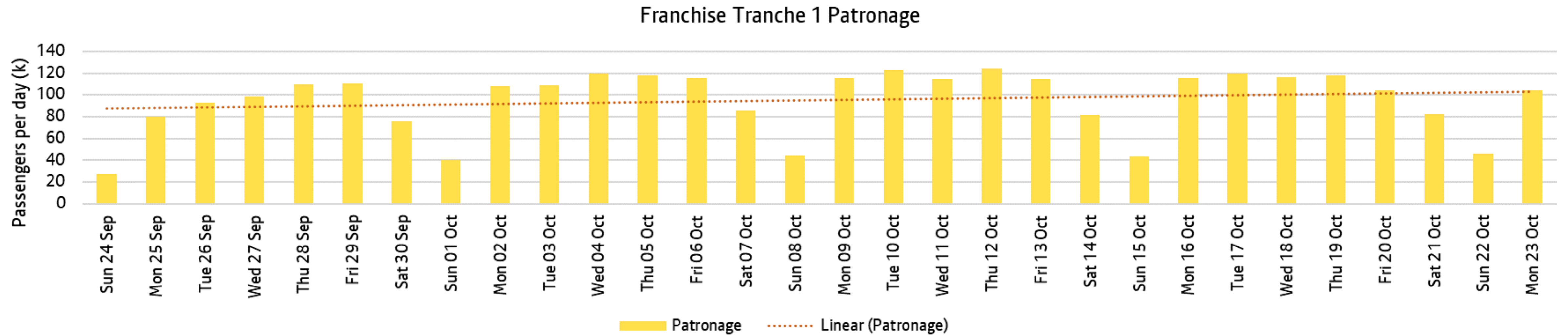
# V1 Service Performance



Performance of the popular V1 service between Leigh and Manchester is now consistently outperforming pre-franchise service levels when compared with on time departure data from Leigh for the same period last year.



# Patronage



Patronage has grown steadily since the start of Tranche 1 operations with an average of almost 100,000 passengers now being carried by Tranche 1 services each weekday, and over 120,000 on some days.