

GREATER MANCHESTER PLANNING AND HOUSING COMMISSION

Date: 19 March 2020

Subject: Greater Manchester Flood Event Report – Storm Ciara and Dennis

Report of: Jill Holden, Flood and Water Management Programme Manager, Greater Manchester Combined Authority

PURPOSE OF REPORT

To update the Commission on the flood events from storm Ciara and Dennis.

RECOMMENDATIONS

Greater Manchester Planning Housing Commission is requested to

- Note the contents of the report.

CONTACT OFFICERS

Jill Holden, Flood and Water Management Programme Manager
(jill.holden@greatermanchester-ca.gov.uk)

Anne Morgan, head of Planning Strategy (anne.morgan@greatermanchester-ca.gov.uk)

David Hodcroft, Principal (david.hodcroft@greatermanchester-ca.gov.uk)

1.0 Greater Manchester - Storm Ciara and Dennis.

1.1 Storm Ciara hit Greater Manchester (GM) on 9th February 2020 with wind speed in excess of 80mph. Fallen trees affected Metrolink trams including services to Rochdale, Bury and East Didsbury and flooding affected train services in several areas including Todmorden, Rochdale, Manchester Victoria, Bolton and Piccadilly.

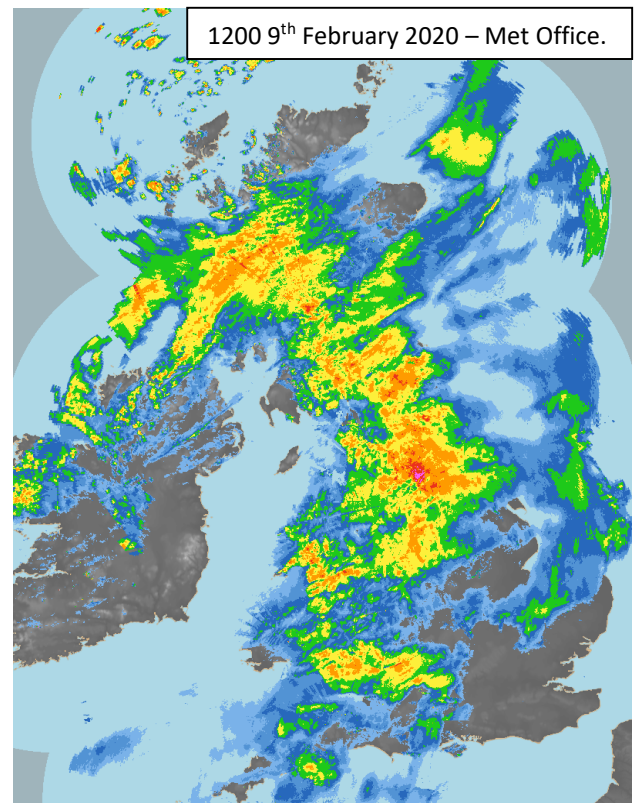
1.2 Bolton, Bury, Rochdale, Tameside and Wigan all reported properties flooded from a combination of sources e.g. culvert surcharge, river and highway surface water run-off.

1.3 The total number of flooded properties collated from the EA and Local Authorities are 71 residential, 23 businesses.

1.4 All reports of flooding are still being investigated and figures may change once the validation process is complete. United Utilities (UU) are still investigating reports of flooded properties that fall within their remit and will provide an update in due course.

1.5 Storm Dennis hit the region on 18th February 2020 but no reports of flooding to properties have been received in GM following the storm. However there was disruption to motorways and local roads.

1.6 As no properties are known to have flooded during storm Dennis the following report is focused on the impact of storm Ciara.



2.0 Local river levels and rainfall data

2.1 River levels recorded on the River Irwell and River Roch were significant, recording the 2nd highest level on record at the following three river gauges:

- **Blackford Bridge**, Bury (R. Roch, just upstream of Irwell confluence – this gauge has been in place since 1948)
- **Bury Ground**, Bury (R. Irwell) and **Littleborough** (R. Roch) (3 of the 4 largest events on record have happened between March 2019 and now). The highest at these stations was Boxing Day 2015.

2.2 Rainfall data at key points in the upper catchments - the higher figures are equivalent to more than a month's rainfall in half a day. Many of the flooded locations are the same as Storm Eva, 2015.

- Holden Wood (Upper Irwell) 70mm in 12 hours
- Bacup (Upper Irwell) 69mm in 12 hours
- Cowm (Upper Irwell)/(Upper Roch) 40mm in 12 hours.

3.0 Warning and informing

3.1 The EA issued 30 flood warnings to areas across GM.

3.2 Flood defence assets across the Greater Manchester area were operated, reducing the risk to 12,000 properties. This included the operation of the two Salford flood storage basins, Littleton Road and Castle Irwell, as well as clearance of many debris screens.

4.0 Flooding impact on districts.

4.1 Bolton – 25 households and 5 business properties

- Flooding to Riverside Drive, Prestolee from the River Irwell to 25 homes. Council team including 10 x Adult Social Care, 2 x Housing, 2 x Forward Incident Officers, Neighbourhood Services and Waste visited the area to assess needs and respond accordingly. Neighbourhood Services are carrying out clean up to the properties. One family is displaced and will be out of their home for six months.
- Electricity and gas supplies were temporary affected but were restored by Tuesday 11th February.
- Riverside Drive, Prestolee, Bolton was also flooded during Storm Eva, 2015 with over 50 homes reporting flood damage. Since 2015 the Environment Agency have been looking at the viability of flood defences.

4.2 Bury - 32 households and 4 business properties

- Key areas affected were Warth Road and Openshaw Fold. Residents were evacuated Sunday morning and some are still displaced. Skips have been provided through Six Town Housing and clean up continues. The Fire Service attended to assist residents trapped from flood water.
- The EA and their contractors (BAM) working on Radcliffe and Redvales Flood Risk Management Scheme (Phase 1) tried to plug the public access gaps in the defences, to reduce risk of flooding to Close Park, Bury. This was not successful and water levels overtopped every temporary defence and inundated the park. Flooding occurred halfway up the top car park and cabins have been under 1.8m of water along with some of the plant machinery.

- Work was also carried out to fill the gaps at end of Morris Street by creating a temporary bund which prevented flooding to around 100 properties.

4.3 Rochdale – 14 businesses

- Confirmed reports of flooding to 14 businesses from the Greenvale Business Park / Todmorden Road area of Littleborough. Most were 1 – 12 inches depth of floodwater. On the whole the main disruption was some loss of stock, cleaning up and some lost production time while this was done. Most were back in business later the same day or the following day after cleaning up. There was also some issues with traffic accessing and using Todmorden Road whilst the flooding was occurring. There were requests to close Todmorden Road but the peak of flooding happened so quickly, that it soon dissipated afterwards and once officers could get there, it was not required to be closed at that point.
- Some flooding to cellars and external properties, including garages and gardens were also reported and will be investigated further to ascertain if there are any issues that can be rectified or mitigated to help reduce further future risk.

4.4 Tameside – 8 households

- On the weekends of 8/9 and 15/16 February drainage engineers and maintenance crews were deployed to ensure critical drainage inlet structures were inspected and cleared. A total of 8 properties were flooded during storm Ciara from surcharging or blocked culverts in Hyde and Dukinfield. The following working week gangs responded to impacts from storm Ciara and Dennis and reports from residents. No additional resources had to be brought in with the exception of road sweepers which were deployed across the borough to help remove debris for main roads.

4.5 Wigan – 4 households

- Flooding to 3 residential properties and a block of flats (ground floor lift space) were reported. Source of flooding was from different sources including highway run-off, blocked culvert and poorly maintained private ditch. In addition there were numerous highway issues.

4.6 United Utilities – River Irwell, Kearsley pipe bridge,

- Kearsley pipe bridge damaged due to high water levels. The bridge carried sewage from Kearsley Pumping Station to Bolton Wastewater Treatment Works as well as the pumping station power supply.
- UU electronically isolated the pumping station and flows were pumped via a temporary pipe carried by another bridge over the river.
- Samples were taken and there was no impact on water quality.

5.0 Flood Recovery Framework - Resilience Grants

5.1 The Government to provide further support under the Flood Recovery Framework, to district or unitary local authority areas that have **25 or more flooded households**. Bury and Bolton Councils are the only districts in Greater Manchester where properties are eligible.

6.0 Next Steps

6.1 Community engagement - drop in sessions have been arranged for flood affected areas in Bury and Bolton to engage with the community and help verify flood outlines. Information collected will feed into the section 19 investigations and in turn improve the evidence base to inform future projects.

6.2 Long term engagement - approaches are needed across all areas at risk by providing an honest broker/trusted contact for the community especially in more vulnerable areas. Explore existing practices in districts where this has been successful and identify transferable approaches.

6.3 Data collection/reporting process - GMCA and the EA have commissioned a project to review data collection and consider potential options for future central data platforms. Collecting data across districts and partners to provide accurate reporting is difficult and whilst there are processes in place there remains issues with consistency of both data collection and reporting of the event. The project is expected to conclude by the beginning of May 2020, recommendations/options can then be considered.

6.4 Insurance and affordability – discussions are ongoing with Rochdale Council, RFCC, National Flood Forum and Flood Re to scope a possible project that explores approaches and transferrable ideas/practice for some key issues around disadvantaged communities, insurance cover, engagement with landlords and housing standards to help tackle/deliver affordable and sustainable flood resilience.

6.5 Reducing risk - capital projects

- Radcliffe and Redvales currently constructing Phase1, Phase 2 next - complete by 2021 protecting around 1000 properties.
- Rochdale and Littleborough – Planning application for Phase 1a submitted last month, with community drop in session held 3rd February. Start on site aimed for summer 2020.
- Prestolee – developing business case, waiting for announcement of acceleration money to see if the EA have money to develop preferred option in 2020/2021. The EA have met the MP (Yasmin Qureshi) twice in the last 6 months.