

The background is a solid orange color. It features several large, abstract geometric shapes in white and black. On the left, there is a large white curved shape. A black curved shape is positioned next to it. At the top center, there is a white triangular shape pointing downwards. In the top right corner, there is a black circular shape. In the bottom right corner, there is a black vertical rectangular shape.

Greater Manchester

YOUTH JUSTICE TRANSFORMATION

ADCS Policy Paper: **‘A Youth Justice / MoJ Review of Custodial Remand for Children’**

National policy recommendations / reports support the case for change e.g. “Startling achievements” in reducing numbers entering the system over the last decade or so but...

- ☐ Significant practice and policy challenges unaddressed e.g. over-representation (care, SEND, racial) and a crisis in custody
- ☐ Since 2016’s BBC panorama programme on Medway STC, dozens of reports and reviews have been published making hundreds of recommendations for change
- ☐ Many common themes in these findings and recommendations but change either slow or non-existent.

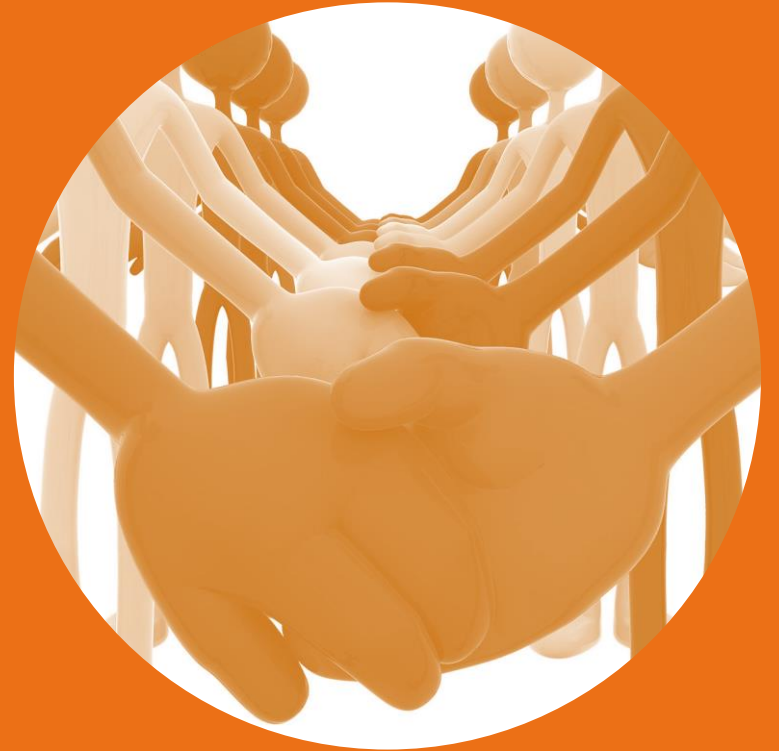
A truly 'child first' approach requires changes at a national and local level;

Policy/guidance

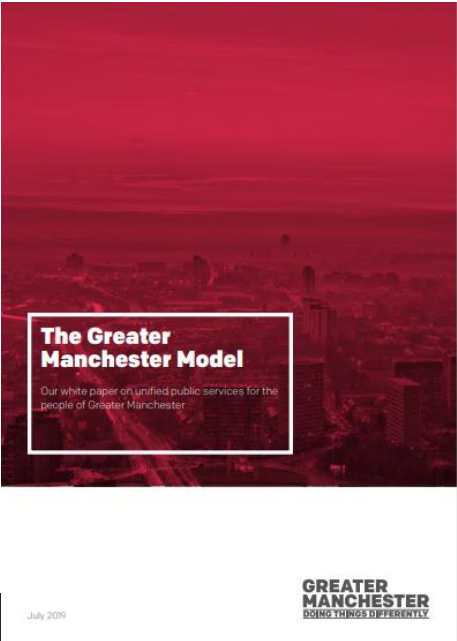
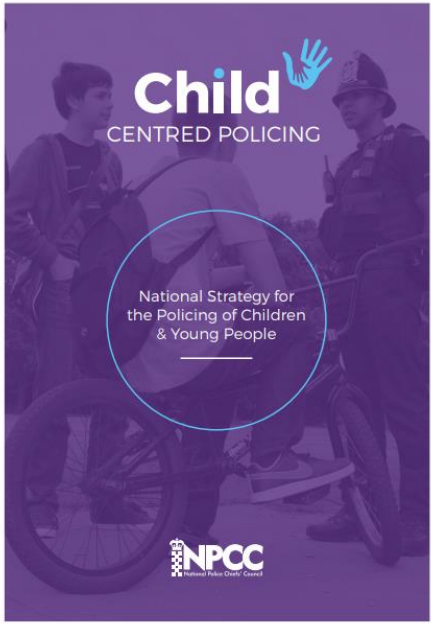
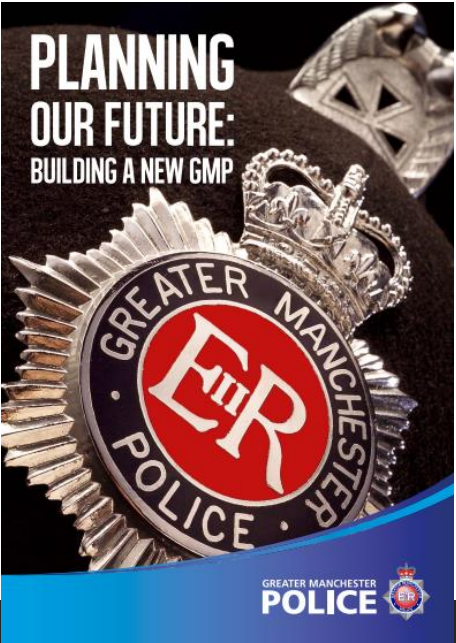
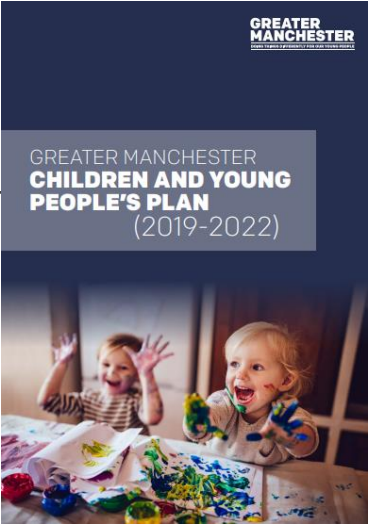
Practice

Partnerships

Our vision is to:
*‘Improve the lives of young people, victims and the community, through taking a **‘child first’ approach** to youth justice that **reduces offending and reoffending** through tackling offending behaviour at **each point of the system**’.*



We are all working to one thing



The GM Youth Justice Transformation Programme

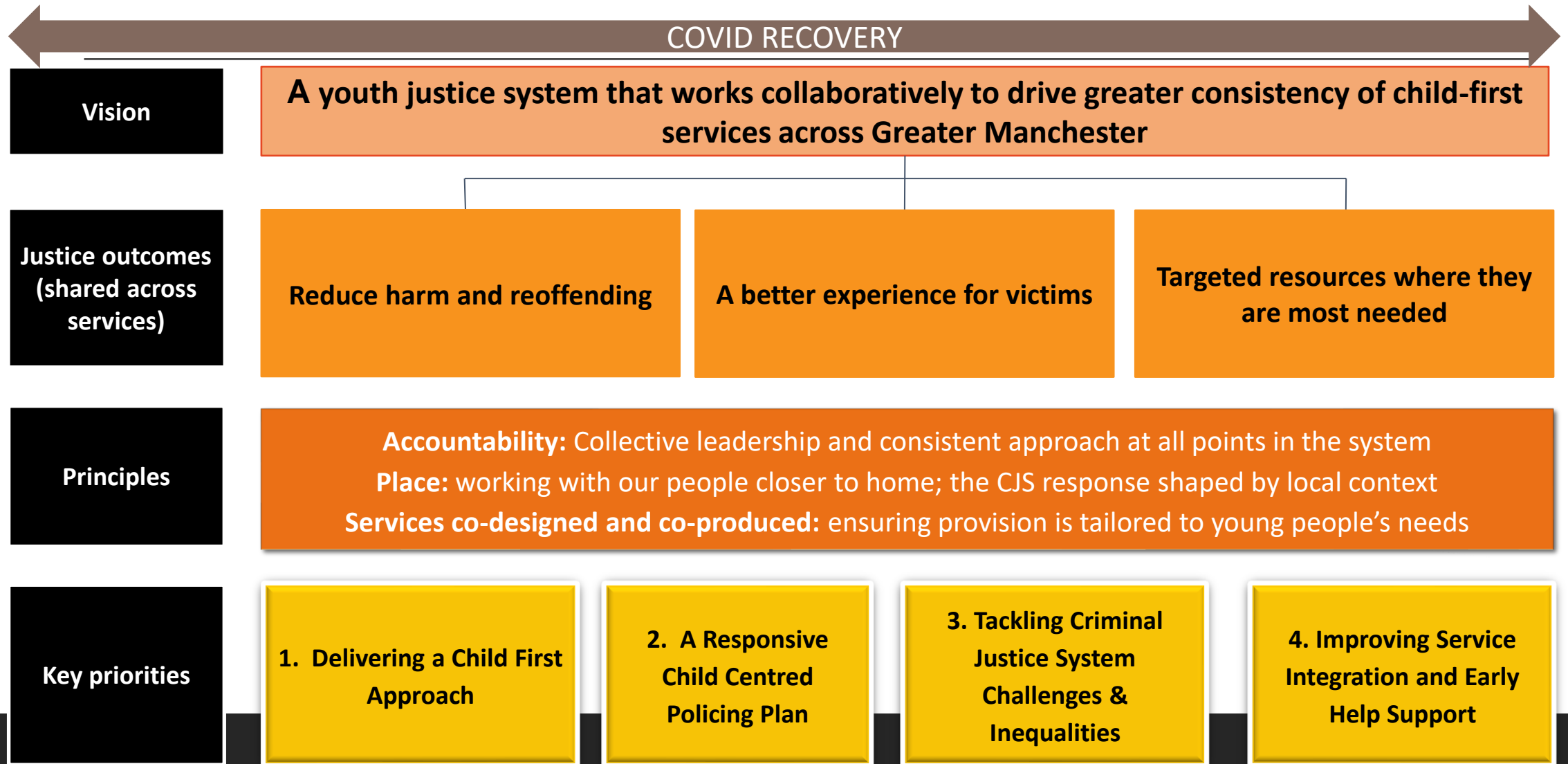
Partnership between Greater Manchester Combined Authority (GMCA), the ten Greater Manchester local authorities, GMP and the wider criminal justice system.

The GM Youth Justice Transformation Programme is underpinned by an MoU between GMCA and the ten GM Directors of Children's Services.

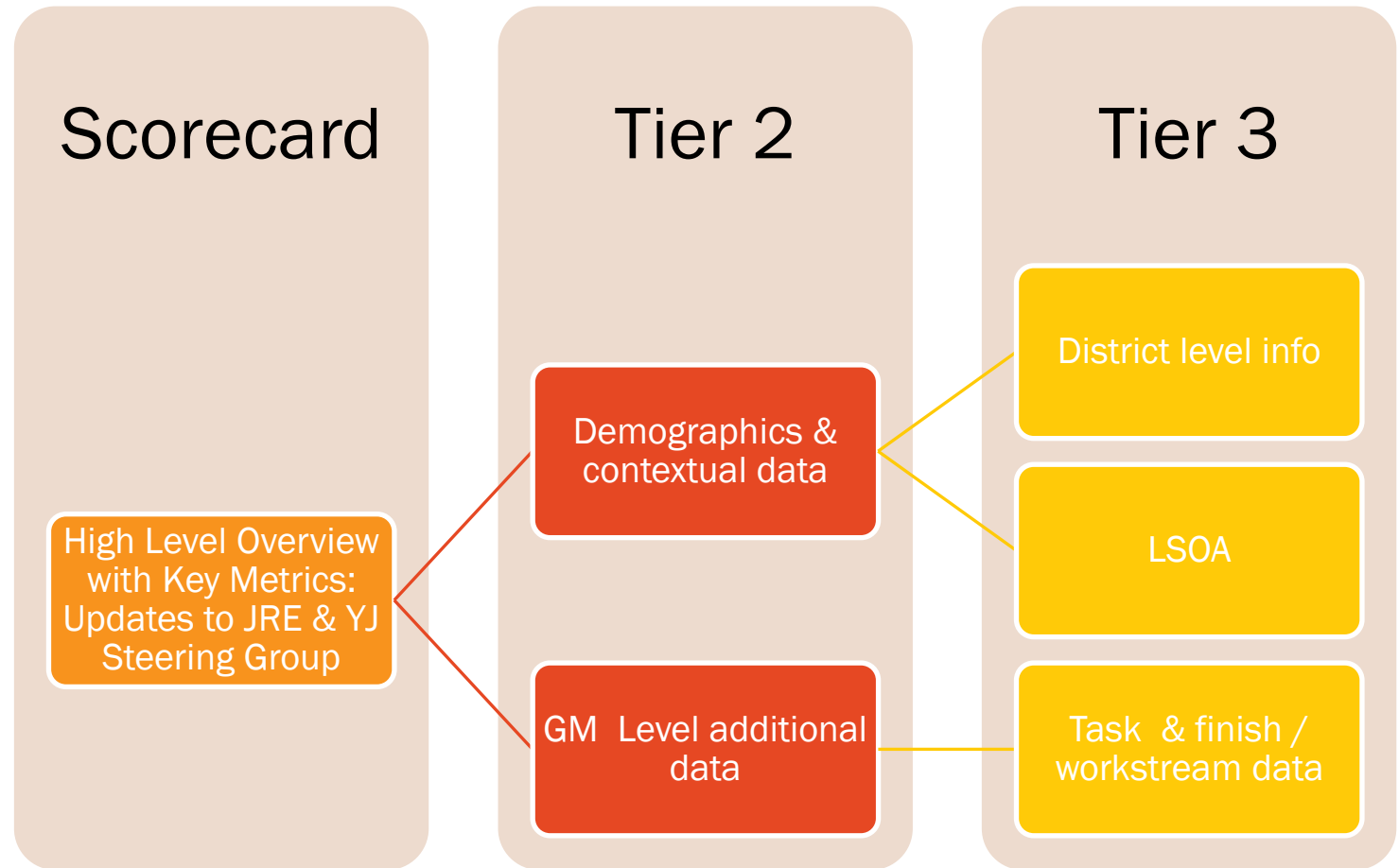
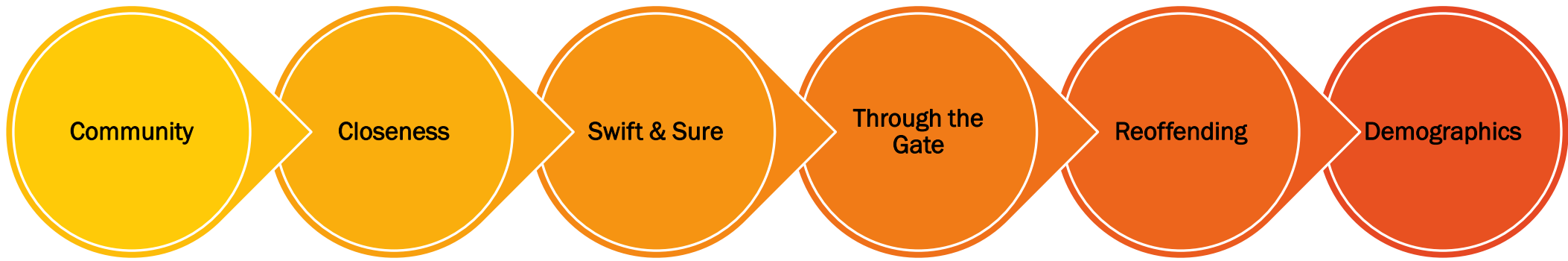
The Plan is linked to other GM strategies including the GM Children & Young People Plan, with particular emphasis on adolescence, and the development of the GMP Child Centred Policing Strategy.

The work programme recognises the importance of addressing inequalities both within the youth justice system and the wider criminal justice system.

A Child-First Youth Justice framework for Greater Manchester



Scorecard development



Justice & Rehabilitation Executive Dashboard: Youth Justice Transformation (a)

GMCA

BOLTON
BURY

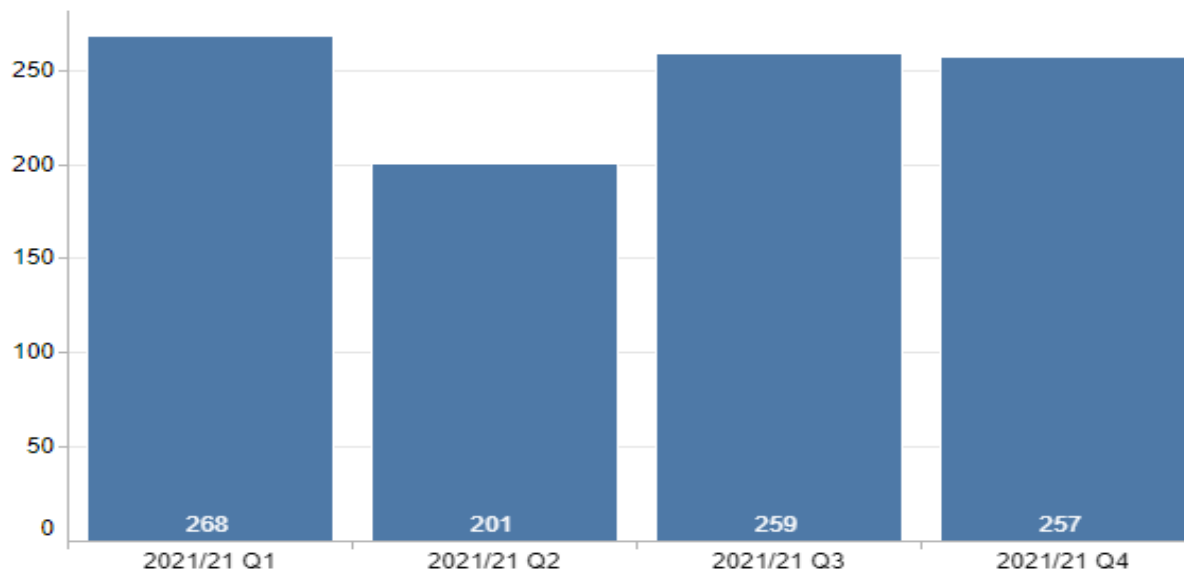
MANCHESTER
OLDHAM

ROCHDALE
SALFORD

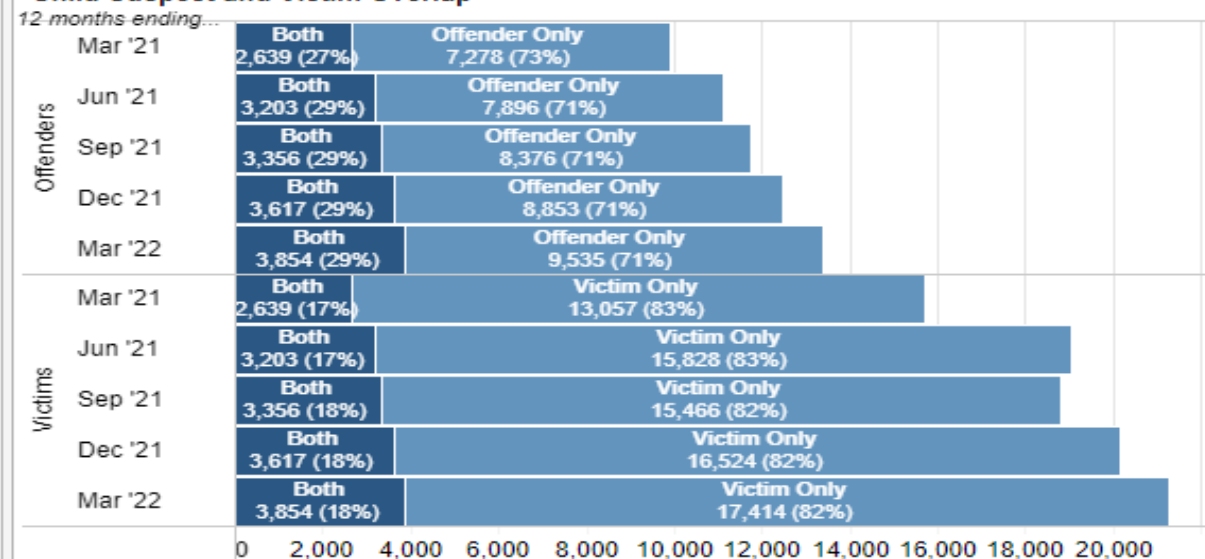
STOCKPORT
TAMESIDE

TRAFFORD
WIGAN

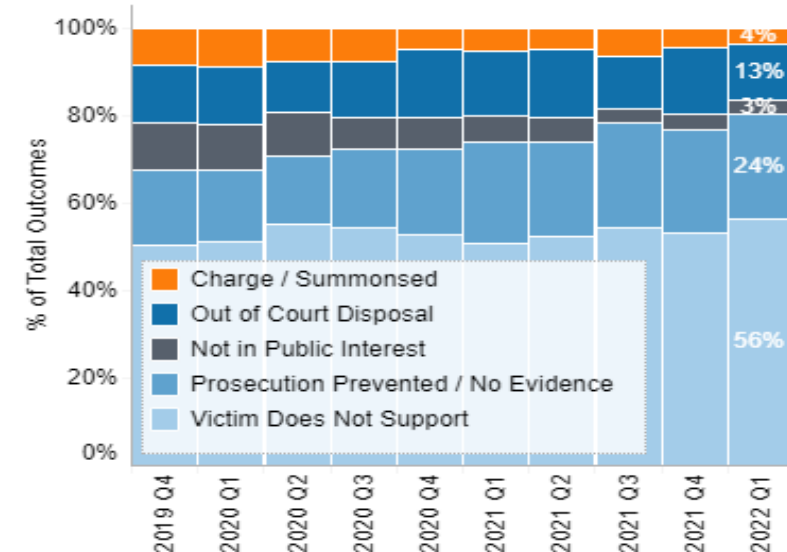
Referrals to Early Intervention and Prevention Grant (EIPG) Services



Child Suspect and Victim Overlap

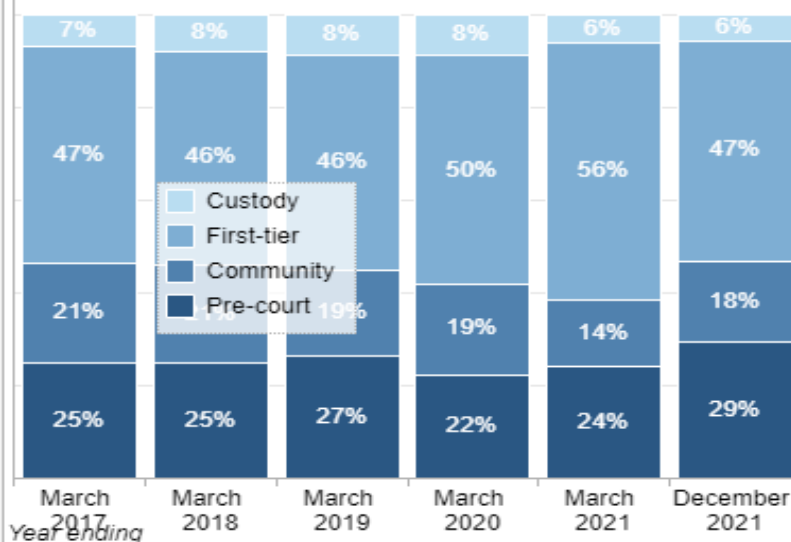


GMP Investigative Outcomes for Under 18 Suspects (excl. pending / unknown)



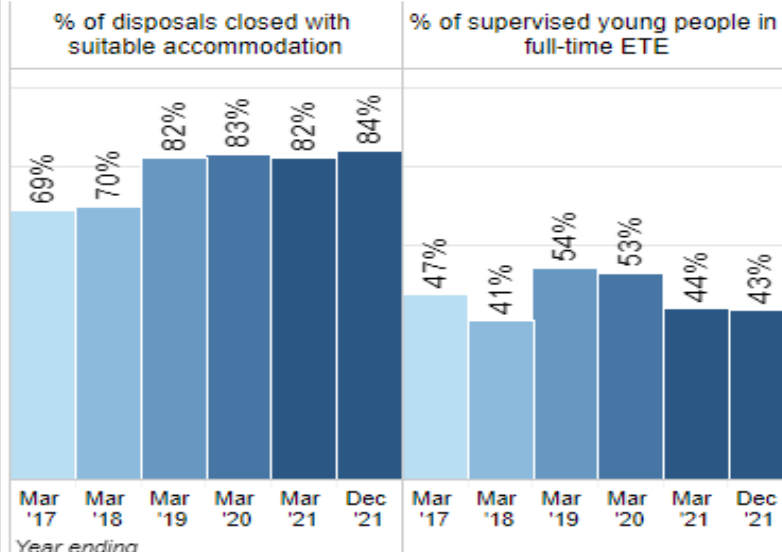
Youth Justice Disposals

Latest data Apr to Dec 2021 and does not include Bolton



Youth Justice Disposals

Latest data Apr to Dec 2021 and does not include Bolton



Justice & Rehabilitation Executive Dashboard: Youth Justice Transformation (b)

GMCA

BOLTON
BURY

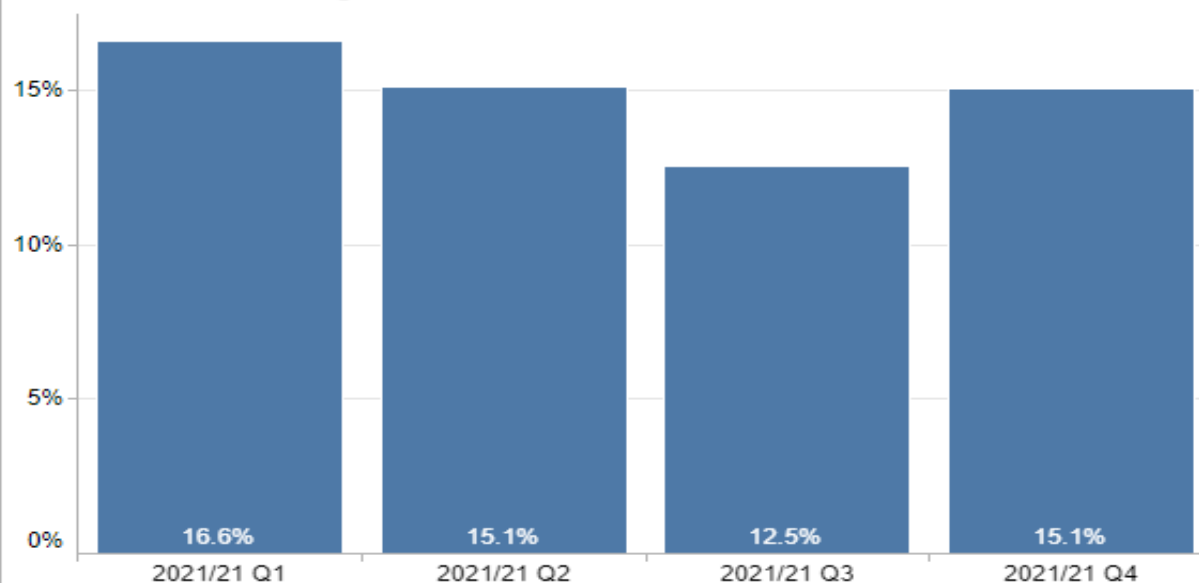
MANCHESTER
OLDHAM

ROCHDALE
SALFORD

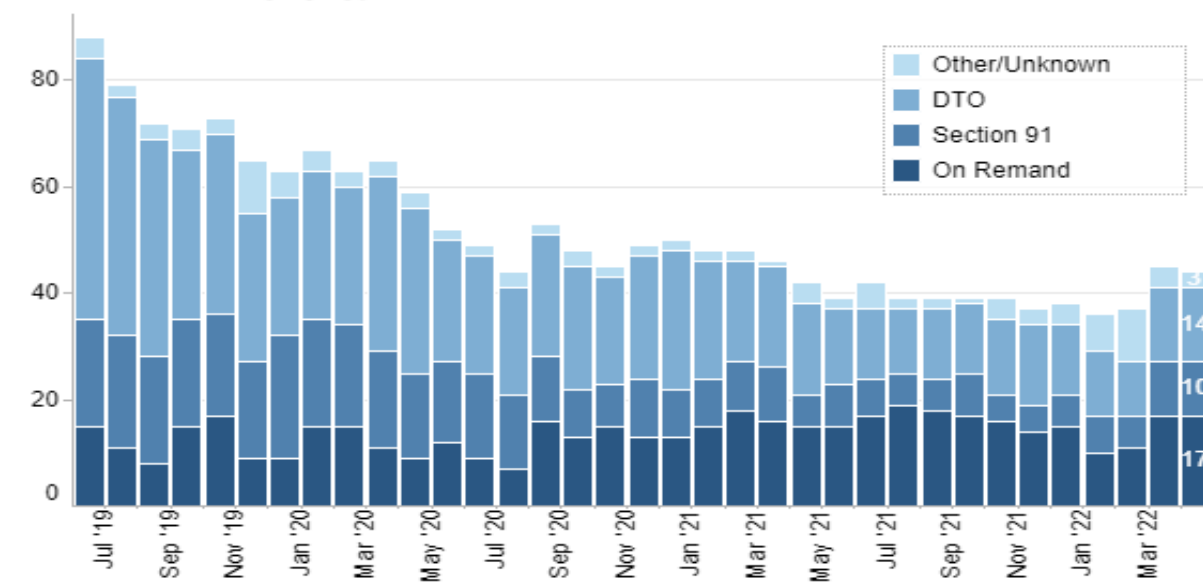
STOCKPORT
TAMESIDE

TRAFFORD
WIGAN

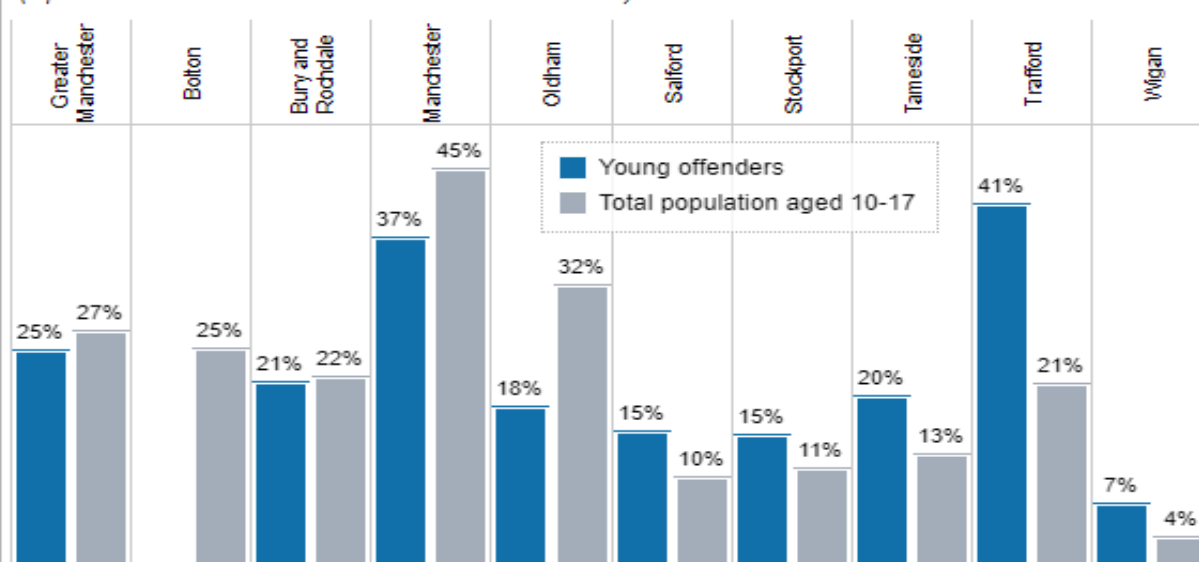
% of GM Youth Offending Caseload that are Looked After Children



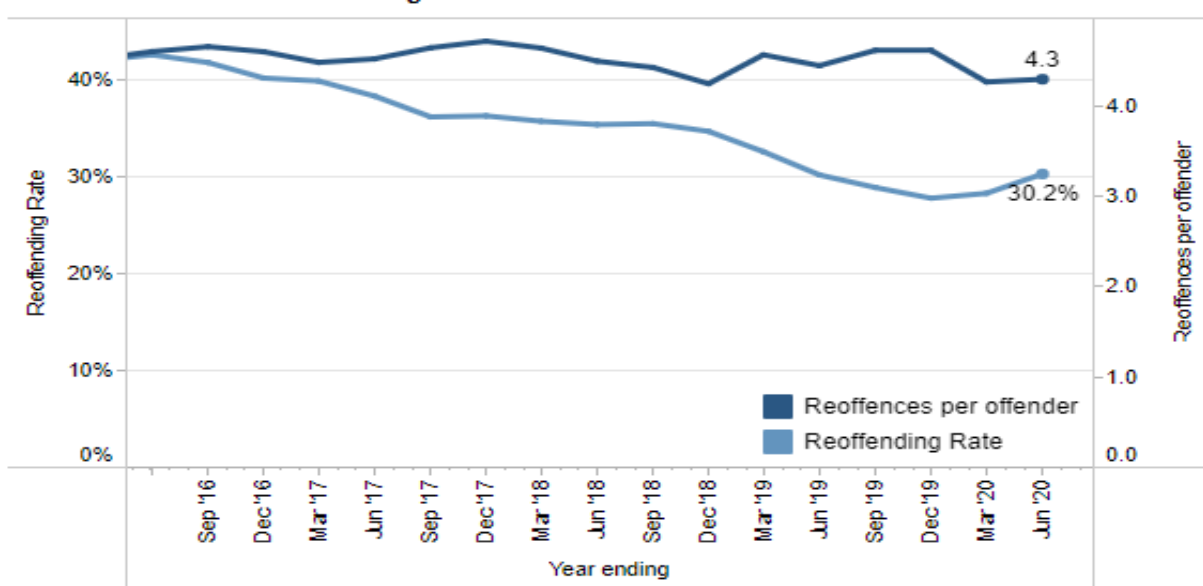
Children in Custody by Type



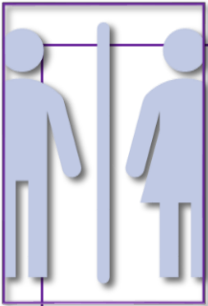
Ethnic Minority Children on Youth Justice Caseload
(April 2021 to Dec 2021 - Bolton data unavailable)



Under 18s Proven Reoffending Rate



Demographic Breakdowns



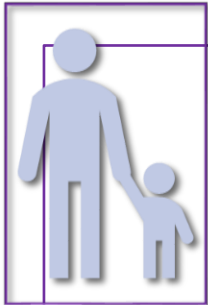
Gender



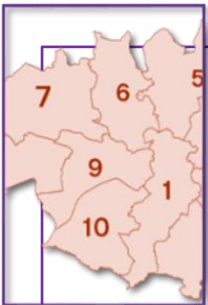
Deprivation



Ethnicity



Looked after child



Geography



Special Educational
Needs / Disability /
Difficulty

An abstract graphic on the left side of the page, featuring a solid orange background. Overlaid on this are several geometric shapes in black and white: a large white circle on the left, a black circle in the upper right, a white triangle pointing downwards in the upper center, and a black vertical bar on the right. A white triangle also points to the right from the left edge, overlapping the orange background.

Greater Manchester

RESETTLEMENT CONSORTIUM

A solid dark grey horizontal bar at the bottom of the page.

Some Key National Context

https://assets.publishing.service.gov.uk/government/uploads/system/uploads/attachment_data/file/1054236/Youth_Justice_Statistics_2020-21.pdf

Reoffending rate of cohort is 65%.
On short sentences this rises to 77%

violence related offences now make up the whole of the GM population (sentenced)

of those not resulting in custody half are acquitted, half go onto community settings

560 young people in custody nationally, 50-60 in Greater Manchester

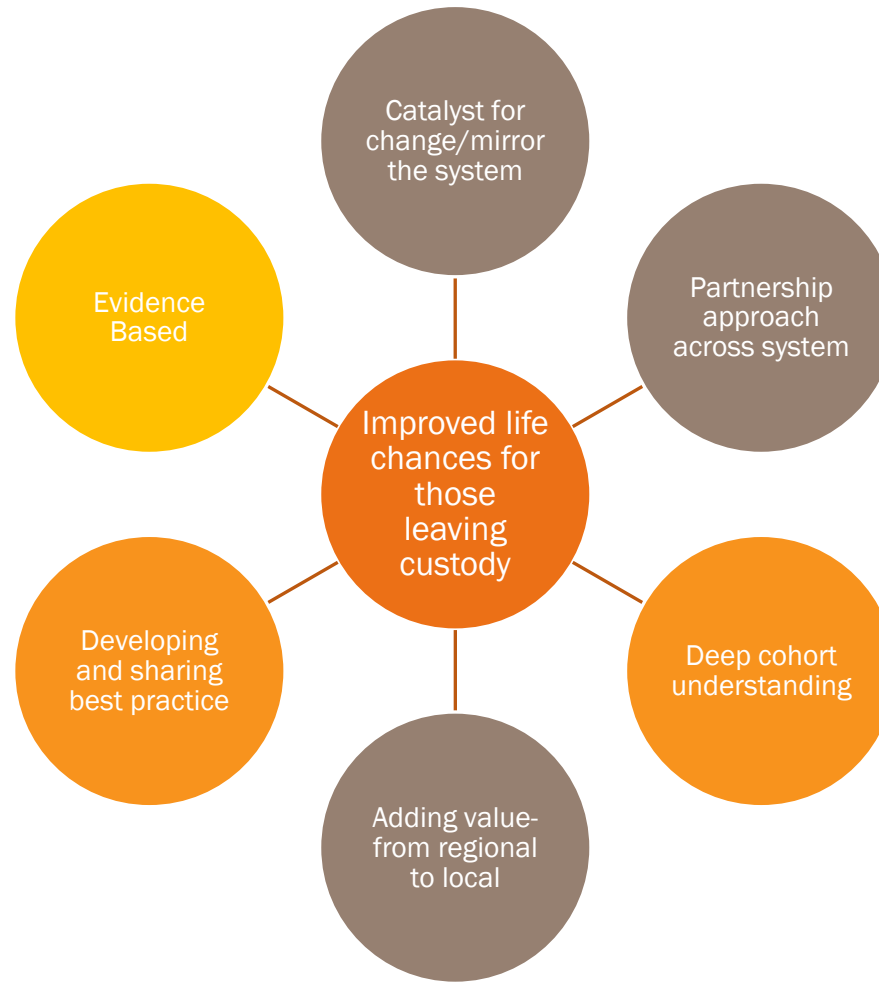
children from a black ethnic account for 29% of the population, compared with 18% ten years ago;

$\frac{3}{4}$ of young people remanded to custody receive a non custodial outcome

violence against the person and accounted for over half (61%) of the youth custody population

78% of the population are more than 25 miles from home. 15 % are 100 miles and over

What is the resettlement consortium?



Policy/guidance

Practice

Partnerships

Greater Manchester Milestones



Policy/guidance

Practice

Partnerships



Collaboration in Practice Example

