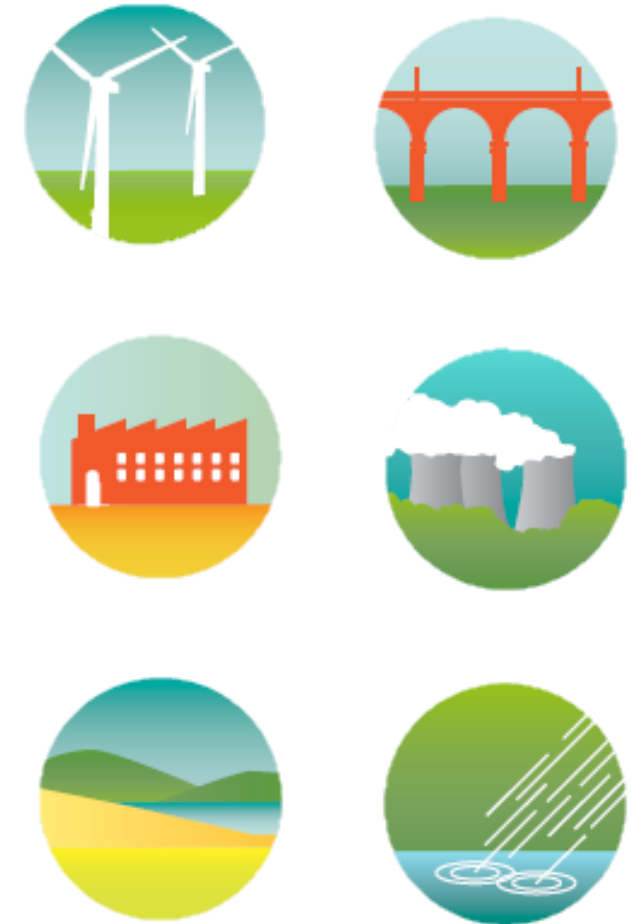


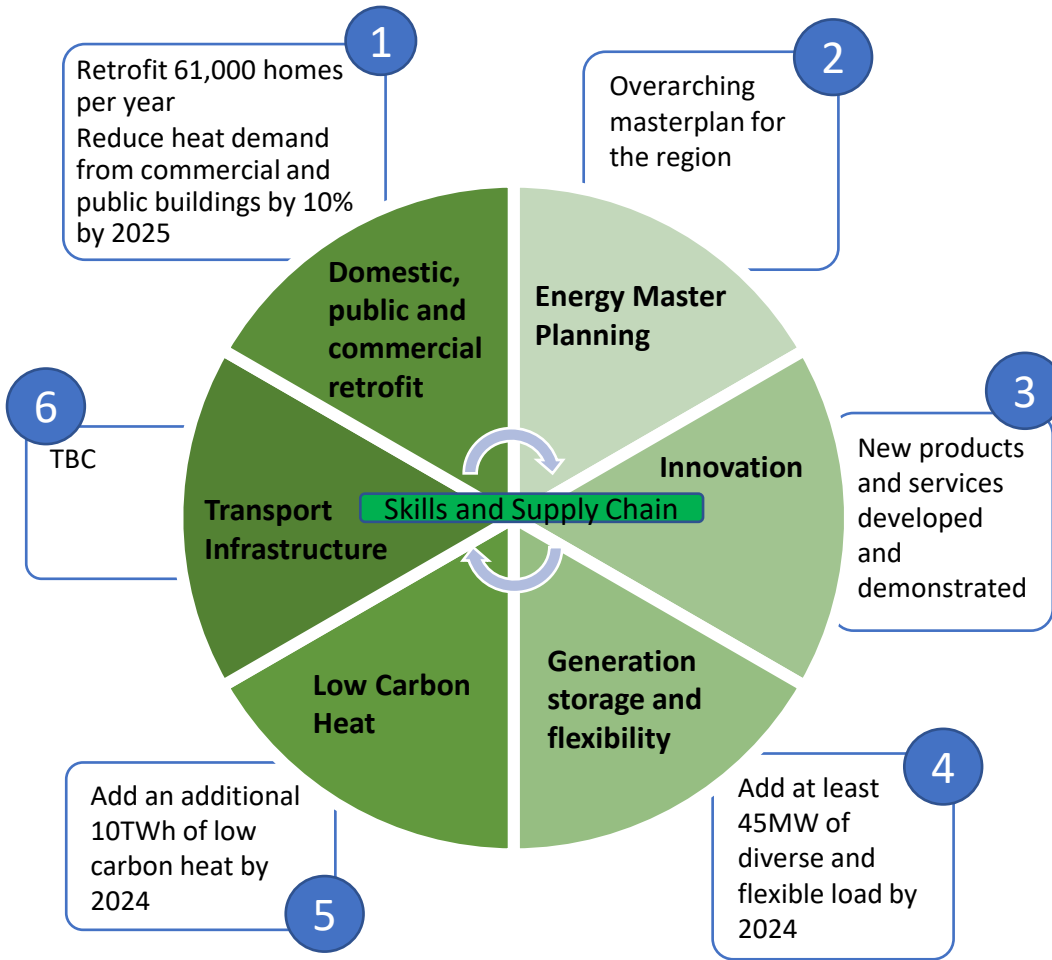
# THE 5 YEAR ENVIRONMENT PLAN CHALLENGE GROUP UPDATE



#GMGreencity

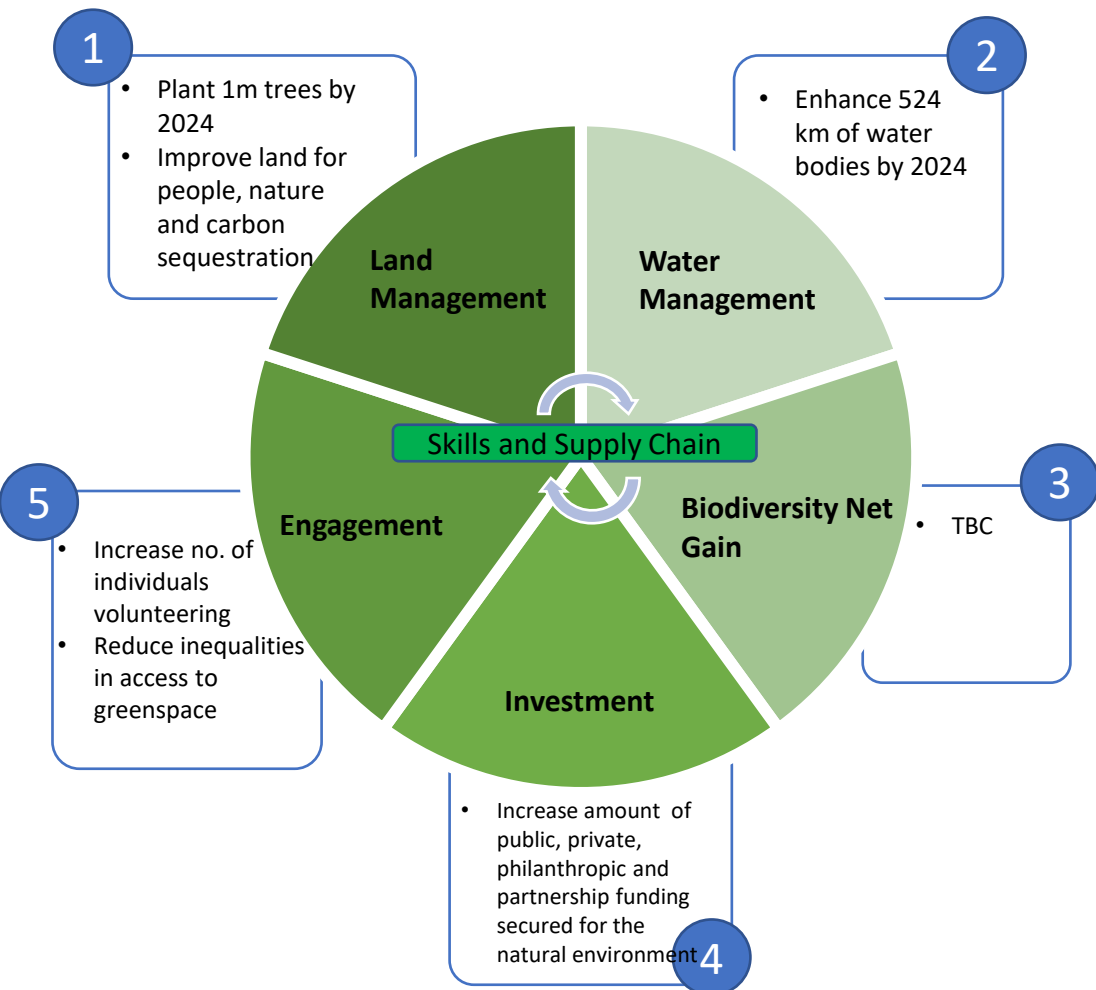
**GREATER  
MANCHESTER**  
DOING THINGS DIFFERENTLY

# Low Carbon



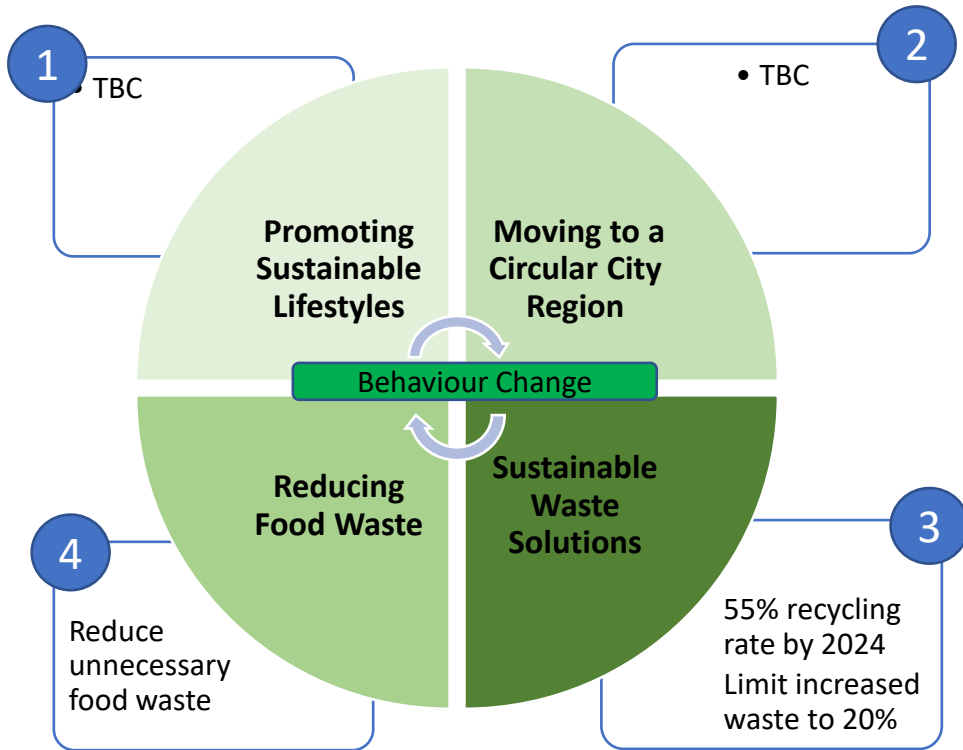
| Project/Task & Finish Group                 | Lead                                    | Priority | Deliverable   | RAG |
|---|---|----------|---|-----|
| Your Home, Better                           | GMCA/Retrofit Works                     | 1        | Deliver able to pay retrofit scheme                                     |     |
| Retrofit Skills T&F                         | UoS/ Retrofit Taskforce                 | 1        | Deliver skills plan for retrofit  |     |
| Retrofit Finance T&F                        | GFI/Retrofit Taskforce                  | 1        | Work with the retrofit taskforce to deliver finance plan for retrofit   |     |
| Social Housing Decarbonisation Scheme 1,2   | GMCA/RPs                                | 1        | Deliver retrofit measures to 1286 properties and prepare bid for wave 2 |     |
| Green Homes Grant LAD                       | GMCA                                    | 1        | Deliver retrofit measures to 2327 homes to move to EPC C or above       |     |
| ERDF Homes as Energy systems                | Procure Plus                            | 1        | Deliver energy efficiency and technologies measures to GM homes         |     |
| People Powered Retrofit – One Stop Shop     | Carbon Coop                             | 1        | Launch of offer for early adopter, owner occupier able to pay           |     |
| Public Sector Decarbonisation Scheme 3a, 3b | DoPE Group                              | 1        | Complete retrofit measures of public buildings to deliver               |     |
| Local Energy Market                         | GMCA                                    | 2        | 11 Local Area Energy Plans and market maker platform                    |     |
| Energy Innovation Agency (EIA)              | Universities/Bruntwood/SSE/GMCA/Hitachi | 3        | Support businesses and bring new technologies to market                 |     |
| Hydrogen Fuel cell                          | MMU/Cadent                              | 3        | Explore hydrogen fuel cell innovation                                   |     |
| Trafford Energy Park                        | Carlton Power                           | 3        | Local green hydrogen production   |     |
| Go Neutral                                  | GMCA                                    | 4        | Develop pipeline to deliver 85MW of Solar PV                            |     |
| Heat Pump Offer                             | Octopus                                 | 5        | Heat Pump offer for households  |     |
| CDDP 3                                      | AECOM                                   | 6        | 4 outline business cases to deploy decarbonised heat                    |     |
| EV Charging Infrastructure                  | ENW                                     | 6        | TBC   |     |

# Natural Environment



| Project/ Task   | Organisation  | 5YEP KPI | Outcome  | RAG |
|---|---------------|----------|--|-----|
| GM Tree and Woodland Strategy   | City of Trees | 1        | Increased tree cover and benefits provided by them, through planting 1m trees by 2024  |     |
| Natural Course project  | GMCA/EA       | 2        | Improved capacity to deliver water quality improvements and achieve Water Framework Directive objectives across GM   |     |
| Preparing for offsite delivery of Biodiversity Net Gain (BNG)               | GMEU          | 3        | Improved capacity and understanding amongst key stakeholders about their roles, responsibilities and resources required to prepare for and support delivery of BNG.          |     |
| Pilot Local Nature Recovery Strategy  | GMCA          | 3        | More coordinated and focussed action by partners across GM to recover nature, supported by a published pilot report and set of maps for nature recovery in GM                |     |
| IGNITION follow up  | GMCA          | 4        | Case for investment in urban NBS developed, with more sustainable funding routes identified, supported by an evidence base, Living Lab and stakeholder engagement programme. |     |
| GM Environment Fund to secure greater funding into GM's natural environment | GMET          | 4        | Increased number of people connecting with nature including job creation and volunteering opportunities through £1.8m programme  |     |
|   |               |          | Increased amount of public, private and philanthropic and partnership funding secured for the natural environment  |     |
| Natural Environment Social Prescribing activity                             | GMHSCP        | 5        | Increased number of individuals volunteering and with access to green space, facilitated by a programme of green social prescribing  |     |

# Sustainable Consumption and Production



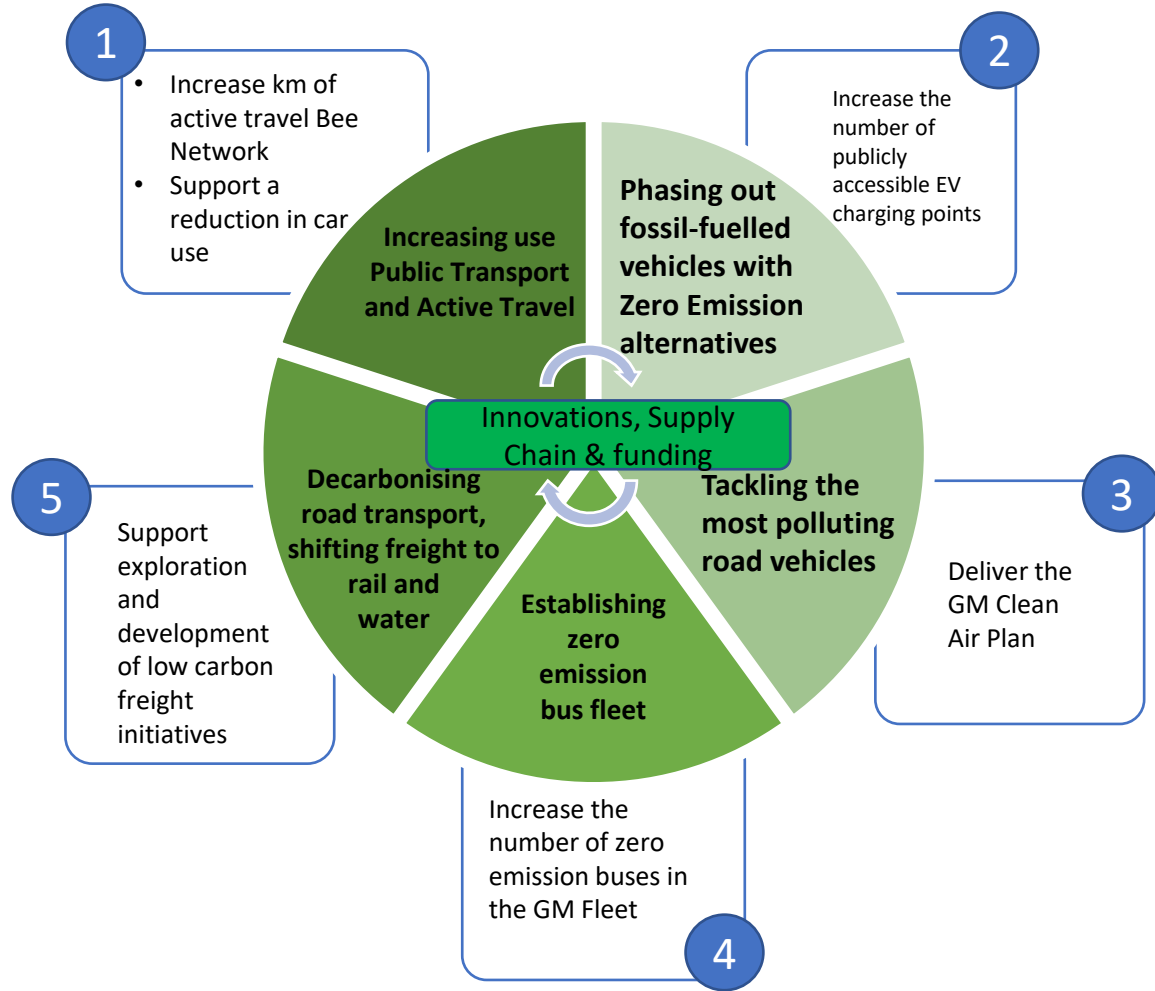
| Project/ Task   | Lead          | 5YEP KPI | Outcome   | RAG    |
|---|---------------|----------|---|--------|
| SCP Plan  | GMCA          | 1,2,3,4  | Develop plan and work with Challenge Group on implementation                | Green  |
| Sustainable lifestyles  | GMCA          | 1,4      | Behaviour change campaigns  | Green  |
|   | UU            | 1        | Joint campaign to households  | Yellow |
| Food Vision and toolkit                                       | GM Food Board | 1,3,4    | Development of food vision and toolkit                                      | Green  |
| Net Zero Business support programme                           | Growth Co     | 2        | Deliver resource efficiency   | Green  |
| Research projects – Reduces, CircBe, One Bin to Rule them all | Universities  | 2,3      | Sustainable solutions to problematic waste streams                          | Green  |
| Consistent collection services (scenario modelling)           | GMCA          | 3,4      | To help shape GM Zero Waste Strategy  | Green  |
| Waste Recycling/Reduction campaigns                           | GMCA          | 1,3,4    | Increase recycling/reduce waste   | Green  |
| Refill Scheme   | GMCA          | 1        | Restart scheme post Covid   | Yellow |
| Local Levers (sustainable procurement)                        | Eunomia       | 2        | Policy development to reduce carbon emissions                               | Green  |
| Resource Flow/Consumption Mapping                             | GMCA          | 2,3      | Greater understanding of commercial sector to aid deliver of CE initiatives | Yellow |

# Communications and Behaviour Change



| Project/Task  | Lead                  | 5YEP KPI | Outcome                           | RAG    |
|---|-----------------------|----------|-----------------------------------|--------|
| 5YEP KPIs   | GMCA                  | 1        | Monitor progress of 5YEP          | Green  |
| Work with SCP Challenge Group on Sustainable Lifestyles | GMCA                  | 1        | Behaviour Change Campaign         | White  |
| Work with partners to deliver Green Summit              | GMCA                  | 1        | Showcase activities within GM     | Green  |
| Behaviour Change Campaigns                              | GMCA                  | 1,2,3    |                                   | Yellow |
| Roll out programme of carbon literacy                   | Carbon Literacy Trust | 3        | Increase knowledge                | Green  |
| Talent and Ambassadors                                  | BBC                   | 1        | Raise awareness of Climate change | Yellow |
| Green Cities Website                                    | GMCA                  | 1,2,3    | Platform to showcase 5YEP         | Green  |

# Transport



| Project/Task  | Lead | 5YEP priority/KPI | Outcome  | RAG |
|---|------|-------------------|--|-----|
| Active Travel Bee Network   | TfGM | 1                 | To provide cycling and walking routes to get people moving                             |     |
| Bike Hire Scheme  | TfGM | 1                 | Promote the use of Bikes   |     |
| E-Hubs Pilot – cargo bikes  | TfGM | 1                 | To promote the use of cargo bikes  |     |
| E-scooter trials  | TfGM | 1                 | Trial e-scooter rental   |     |
| ZEBRA funding   | TfGM | 2                 | introduction of 170 zero emission buses by 2024  |     |
| CRSTS funding   | TfGM | 2                 | A third of the bus fleet as zero carbon by 2027.                                       |     |
| Clean Commercial vehicle fund: HGV – replacement and retrofit         | TfGM | 3                 | Clean Air Plan funds to replace or retrofit HGV vehicles that are not Euro 6 compliant |     |
| Clean Bus Fund: replacement and retrofit                              | TfGM | 3                 | replace or retrofit buses that are not Euro 6 compliant                                |     |
| Deliver the GM Clean Air Plan   | TfGM | 3                 | tackle NO2 Exceedances at the Roadside by 2026   |     |
| EV charging network to support 200k vehicles                          | TfGM | 4                 | Increased number of publicly owned EV connectors in GM                                 |     |
| Establish how the public sector can best influence the rollout of EVC | TfGM | 4                 | Commission Greater Manchester EVCI Study   |     |
| Pilot of Sustainable last mile activities in regional centre          | TfGM | 5                 | Support exploration and development of low carbon freight initiatives                  |     |

**GREATER  
MANCHESTER**  
**DOING THINGS DIFFERENTLY**

@GM GreenCity | #GMGreenCity