



**GREATER  
MANCHESTER**  
DOING THINGS DIFFERENTLY FOR THE ENVIRONMENT

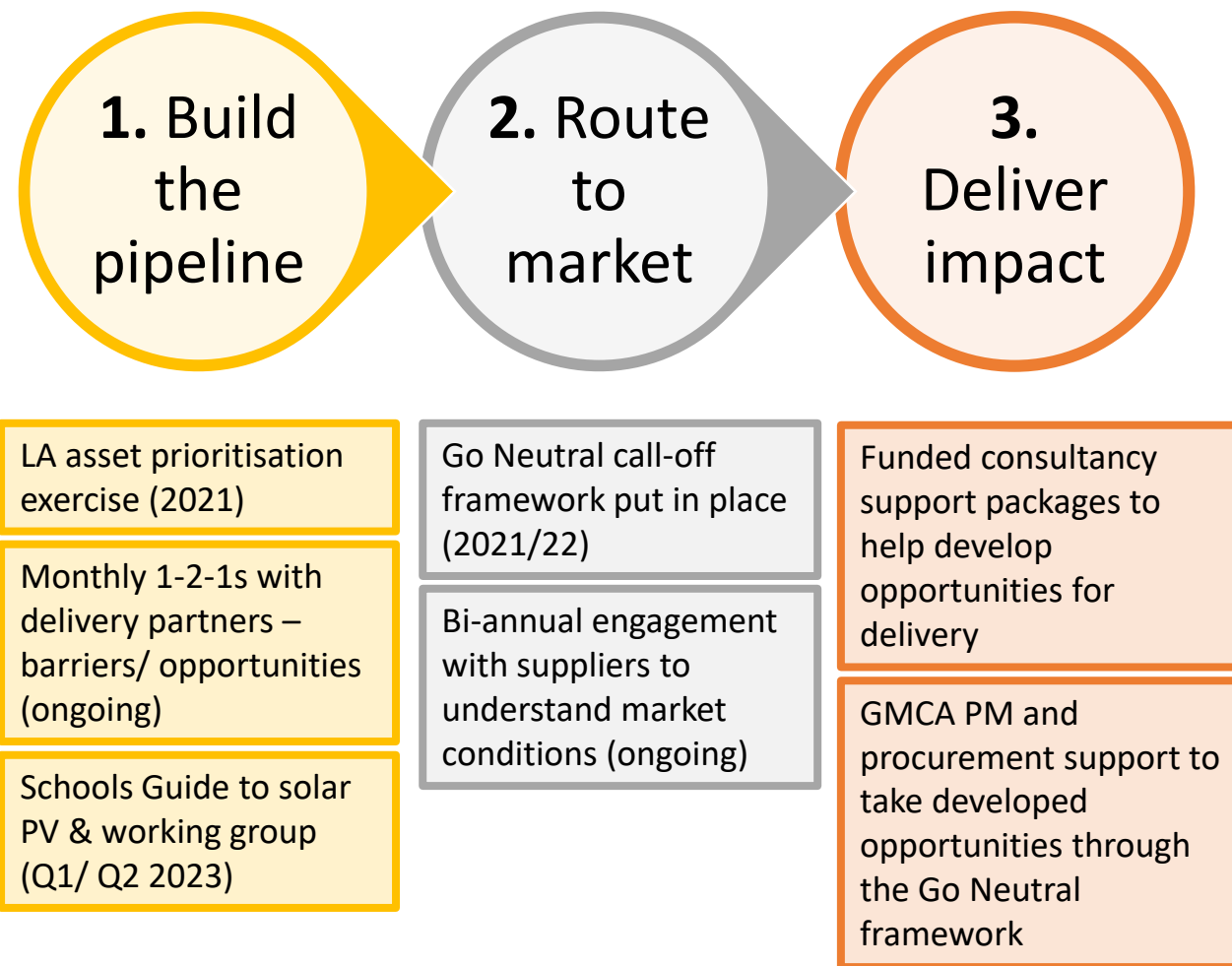
**ITEM 08**

## Go Neutral & Photovoltaics Guide for Schools



# Overview of Go Neutral

- Go Neutral is a GMCA-led programme of activity focused on accelerating deployment of smart energy infrastructure across GM to deliver impact against our 5YEP targets:
  - 45MW renewable generation capacity
  - 45MW diverse and flexible load
- Our activity spans three areas as outlined opposite.

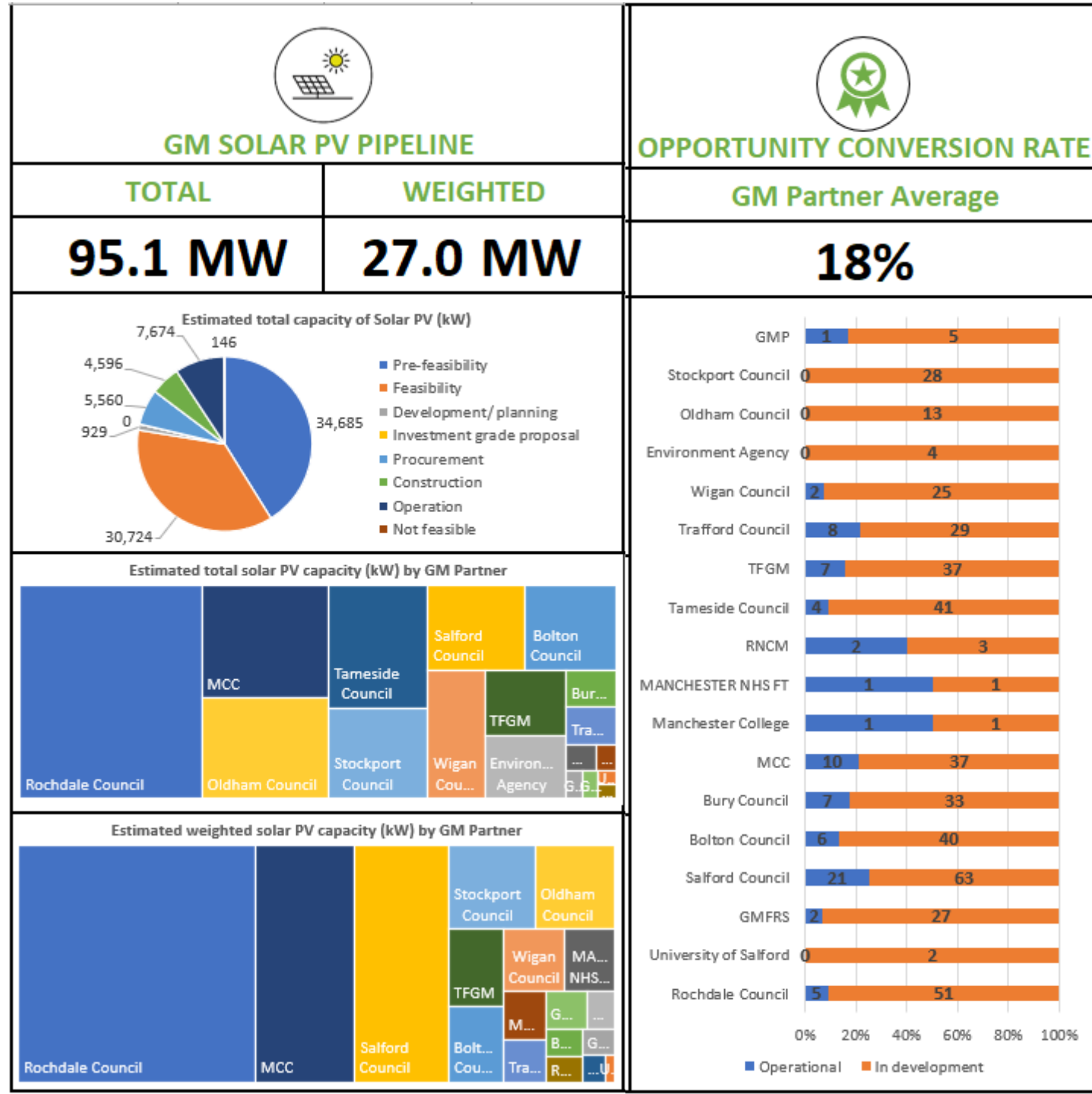


# 1. Build the pipeline

The charts opposite present the current status of the opportunity pipeline for smart energy infrastructure on public sector assets that we are aware of since 2019.

It is shown that, as expected, most opportunities are in the early pre-/ feasibility stages. However, we are seeing growing movement through the procurement, construction and operation stages.

The chart on the far right provides a breakdown of these assets by delivery partner, including total number of opportunities and status (development vs. operation).



## 2. Route to market

In 2021 GMCA launched the Go Neutral call-off framework, which provides a route to market to all public sector bodies in the UK seeking to deliver solar PV and supporting smart energy technologies.

It comprises 4 lots:

<b>Lot 1</b>	Building integrated solar PV (and battery storage, if required)	Self-funded	8 suppliers
<b>Lot 2</b>	Solar car ports (and battery storage/ EV charge points, if required)	Self-funded	5 suppliers
<b>Lot 4</b>	Ground mounted solar PV (and battery storage, if required)	Self funded	5 suppliers
<b>Lot 5</b>	Integrated smart energy solutions (solar PV plus battery storage, EVCI, wind turbines, hydro, etc,...)	Third party funded with option for shared investment/ revenue share arrangements	5 suppliers

# 3. Deliver impact

## Consultancy and procurement support

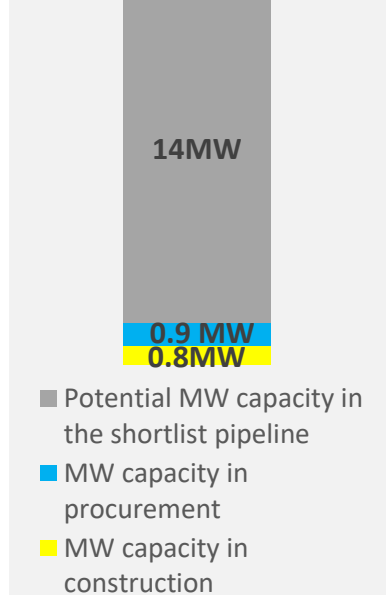
- GMCA has commissioned technical and legal support, to provide support in preparing for further competition(s) for portfolios of assets.
- GMCA is also providing procurement support to run the further competitions.
- GMCA is in the process of procuring a second tranche of consultancy support based on additional demand from the LAs.
- Consultancy support is following a standardised approach as outlined in the green boxes below.



## Current status of pipeline opportunities that have been shortlisted for consultancy/ procurement support:

Local Authority	Buildings	Car parks	Land assets	Status
Rochdale	29	6	8	- <b>In procurement:</b> 4 x roof mounted solar schemes (ERDF funded) - Remaining assets planned for Step 2 consultancy support in Apr 23
Stockport	21	3	3	- <b>In construction:</b> 1 x roof mounted solar scheme (ERDF funded) - <b>In procurement:</b> 4 x roof mounted solar schemes (ERDF funded) - Remaining assets subject to development planned for Step 2 in Apr 23
Salford	21	8	0	- <b>In construction:</b> 2 x solar car ports (ERDF funded) - Procurement exercise for consultancy support for remaining sites currently underway
Bury	23	0	1	- Procurement exercise for consultancy support currently underway
Oldham	4	2	5	- Procurement exercise for consultancy support currently underway
Wigan	1	1	1	- <b>In procurement:</b> 1 x roof mounted solar scheme (ERDF funded) - Procurement exercise for consultancy support currently underway
<b>Total</b>	<b>98</b>	<b>20</b>	<b>18</b>	

Cumulative value of pipeline = 15.7MW/  
£17m investment



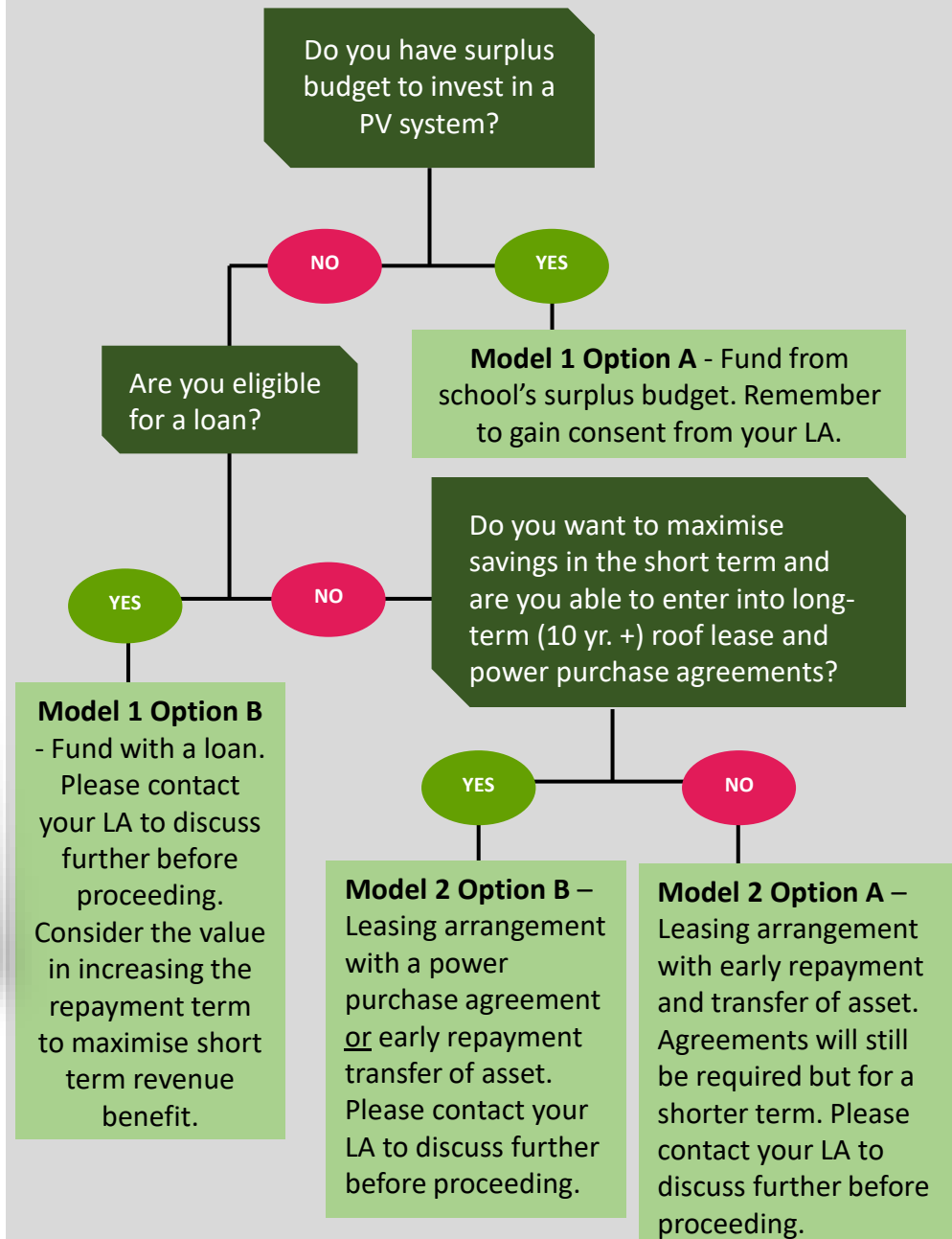
# Greater Manchester School's Guide to Solar PV

**Purpose:** To provide a high level introduction to solar PV to help engage schools on the topic. To help generate a pipeline of schools for a school's solar PV programme.

**Content:**

- High level overview/ key questions/ myth buster
- Outlines two preferred routes to installing solar PV on schools:
  - **Model 1 - Direct purchase**
  - **Model 2 – Leasing arrangement**
- Provide case studies to inspire/ demonstrate what others have done.
- Deeper dive on the financials (for those that are interested)
- References the support that could be available from GMCA (pipeline development/ procurement)
- Outline next steps:
  - EOI to be completed and submitted to LA

## School's Delivery Route Decision Tree



# GCRP Discussion Points

- One of the key barriers to delivery will be how these projects can be financed and concerns over leasing arrangements. Does the partnership have any thoughts on how this could be approached as an aggregated pan-GM portfolio?
- Does the partnership have advice on how we could disseminate the schools solar PV guide?
- Does the partnership consider the guide to be suitable for other sectors to help build awareness/ accelerate delivery of solar PV?